

Universality of Tsallis Non-Extensive Statistics and Fractal Dynamics for Complex Systems

G.P. Pavlos^[1], M.N. Xenakis^[2], L.P. Karakatsanis^[1], A.C. Iliopoulos^[1],
A.E.G. Pavlos^[3], D.V. Sarafopoulos^[1]

¹Department of Electrical and Computer Engineering, Democritus University of Thrace, 67100 Xanthi, Greece (Email: gpavlos@ee.duth.gr)

²German Research School for Simulation Sciences, Aachen, Germany

³Department of Physics, Aristotle University of Thessaloniki, 54624 Thessaloniki, Greece

Abstract: Tsallis q-extension of statistics and fractal generalization of dynamics are two faces of the same physical reality, as well as the Kernel modern complexity theory. The fractal generalization dynamics is based at the multiscale – multifractal characters of complex dynamics in the physical space-time and the complex system's dynamical phase space. Tsallis q-triplet of non-extensive statistics can be used for the experiment test of q-statistic as well as of the fractal dynamics. In this study we present indicative experimental verifications of Tsallis theory in various complex systems such as solar plasmas, (planetic magnetospheres, cosmic stars and cosmic rays), atmospheric dynamics, seismogenesis and brain dynamics.

Keywords: Tsallis non-extensive statistics, Non-equilibrium phase transition, intermittent turbulence, Self Organized Criticality, Low Dimensional Chaos, Magnetosphere, Superstorm.

1. Introduction

Physical theory today has been led into admirable experience and knowledge. Namely, at all levels of physical reality a global ordering principle is operating. Prigogine [1], Nicolis [2], Davies [3], El Naschie [4], Iovane [5], Nottale [6], Castro [7]. All classical physical theory dominates the Demokritean and Euclidean reductionistic point of view. That is, cosmos is created from elementary particles which obey to the fundamental laws, space consists of points and time from moments points or moments have zero measure. In Einstein's relativistic physical theory Democritean (elementary material particles) and Euclidian (points, space, point view) are joined into a unified physical entity that of the space time manifold. Here, geometry explains physics since the forces-fields are identified with the curvature of the space-time manifold. Although Einstein showed, with a rare genius way, the unity of universe through a mathematization and geometrization modification of the

cosmos subject-matter, however he didn't escape from the reductionistic and deterministic point of view [8]. According to this concept, the observed and macroscopic reality is illusion as the only existed reality is the fundamental geometrical and objective reality of the space-time manifold in general. This is the Democritian, Parmenidian, Euclidian, Spinozian point of view.

The overthrow of the dogmatic determinism and reductionism in science started to be realized after the novel concept of Heisenberg according to which the physical magnitude properties are not objective and divided realities but operators as the dynamical states are infinite dimensional vectors. This new concept of Heisenberg led to a new theoretical status corresponding to a microscopical complexity point view of cosmos. Neuman inspired from Heisenberg's novel theory introduced non-commutativity in geometry, according to which Space does not consist of points but from "states". In addition, superstring theory forced physicists to introduce non-commutativity at the Planck scale of space-time, confirming Neuman's as well as Heisenberg's intuition. This, of course, was the initiation of an avalanche of serious changes in the fundamentals of physical theory, corresponding to new theoretical concepts as: poly-dimensional and p-adic physics, scale relativity fractal dynamics and fractal space-time etc El Naschie [4], Khrenminov [9], Nottale [6], Castro [7], Kroger [10], Pezzaglia [11], Tarasov [12], El-Naboulsis [13], Gresson [14], Goldfain [15].

Prigogine [1] and Nicolis [2] were the principal leaders of an outstanding transition to the new epistemological ideas in the macroscopical level. Far from equilibrium they discover an admirable operation of the physical-chemical systems. That is, they discovered the possibility of long range spatiotemporal correlations development when the system lives far from equilibrium. Thus, Prigogine and Nicolis opened a new road towards the understanding of random fields and statistics, which lead to a non-Gaussian reality. This behavior of nature is called Self-Organization. Prigogine's and Nicoli's self-organized concepts inspired one of the writers of this paper to introduce the self organization theory as basic tool to interpret the dynamics of the space plasmas dynamics [16] as well as seismogenesis [17] as a result of the self organization of Earth's manage-crust system. However Lorenz[18] had discovered the Lorenz's attractor as the weather's self organization process while other scientists had observed the self organization of fluids (e.g. dripping faucet model) or else, verifying the Feinebaum [19] mathematical scenarios to complexity includes in nonlinear maps or Ordinary Differential Equations – Partial Differential Equations [20]. However, scientists still now prefers to follow the classical theory, namely that macro-cosmos is just the result of fundamental laws which can be traced only at the microscopical level. Therefore, while the supporter of classical reductionistic theory considers the chaos and the self organization macroscopic characteristics that they ought to be the result of the fundamental Lagrangian or the fundamental Hamiltonian of

nature, there is an ongoing a different perception. Namely, that macroscopic chaos and complexity not only cannot be explained by the hypothetical microscopic simplicity but they are present also in the microscopic reality.

Therefore, scientists like Nelson [21], Hooft [22], Parisi [23], Beck [24] and others used the complexity concept for the explanation of the microscopic “simplicity”, introducing theories like stochastic quantum field theory or chaotic field theory. This new perception started to appear already through the Wilsonian theories of renormalization which showed the multiscale cooperation of the physical reality [25]. At the same time, the multiscale cooperativity goes with the self similarity characters of nature that allows the renormalization process. This leads to the utilization of fractal geometry into the unification of physical theories, as the fractal geometries are characterized by the scaling property which includes the multiscale and self similar character. Scientists like Ord [26], El Naschie [4], Nottale [6] and others, will introduce the idea of fractal geometry into the geometry of space-time, negating the notion of differentiability of physical variables. The fractal geometry is connected to non-commutative geometry since at fractal objects the principle of self similarity negates the notion of the simple geometrical point just like the idea of differentiability. Therefore, the fractal geometry of space-time is leading to the fractal extension of dynamics exploiting the fractal calculus (fractal integrals-fractal derivatives) [27]. Also, the fractal structure of space-time has intrinsically a stochastic character since a presupposition for determinism is differentiability [6, 14]. Thus, in this way, statistics are unified with dynamics automatically, while the notion of probability obtains a physical substance, characterized as dynamical probabilism. The ontological character of probabilism can be the base for the scientific interpretation of self-organization and ordering principles just as Prigogine [1] had imagined, following Heisenberg’s concept. From this point of view, we could say that contemporary physical theory returns to the Aristotelian point of view as Aristotelianism includes the Newtonian and Democritian mechanistical determinism as one component of the organism like behavior of Nature [28].

Modern evolution of physical theory as it was described previously is highlighted in Tsallis q -statistics generalization of the Boltzmann-Gibbs statistics which includes the classical (Gaussian) statistics, as the $q=1$ limit of thermodynamical equilibrium. Far from equilibrium, the statistics of the dynamics follows the q -Gaussian generalization of the B-G statistics or other more generalized statistics. At the same time, Tsallis q -extension of statistics can be produced by the fractal generalization of dynamics. The traditional scientific point of view is the priority of dynamics over statistics. That is dynamics creates statistics. However for complex system their holistic behaviour does not permit easily such a simplification and division of dynamics and statistics. Tsallis q – statistics and fractal or strange kinetics are two faces of the same complex and holistic (non-reductionist) reality.

Moreover, the Tsallis statistical theory including the Tsallis extension of entropy to what is known as q -entropy [29], the fractal generalization of dynamics [6, 7] and the scale extension of relativity theory C [6, 7] are the cornerstones of modern physical theory related with nonlinearity and non-integrability as well as with the non-equilibrium ordering and self organization. In the following, in section (2) we present the theoretical concepts of q -statistics and fractal dynamics, while in section (3) we present indicative experimental verification of the Tsallis statistical theory. Finally in section (4) we present estimations of q -statistics index for various kinds of complex systems and in section (5) we summarize and discuss the results of this study.

2. Theoretical Concepts

2.1 Complexity Theory and the Cosmic Ordering Principle

The conceptual novelty of complexity theory embraces all of the physical reality from equilibrium to non-equilibrium states. This is noticed by Castro [7] as follows: *"...it is reasonable to suggest that there must be a deeper organizing principle, from small to large scales, operating in nature which might be based in the theories of complexity, non-linear dynamics and information theory which dimensions, energy and information are intricately connected."* [7]. Tsallis non-extensive statistical theory [29] can be used for a comprehensive description of space plasma dynamics, as recently we became aware of the drastic change of fundamental physical theory concerning physical systems far from equilibrium.

The dynamics of complex systems is one of the most interesting and persisting modern physical problems including the hierarchy of complex and self-organized phenomena such as: intermittent turbulence, fractal structures, long range correlations, far from equilibrium phase transitions, anomalous diffusion – dissipation and strange kinetics, reduction of dimensionality etc [30-37].

More than other scientists, Prigogine, as he was deeply inspired by the arrow of time and the chemical complexity, supported the marginal point of view that the dynamical determinism of physical reality is produced by an underlying ordering process of entirely holistic and probabilistic character at every physical level. If we accept this extreme scientific concept, then we must accept also for complex systems the new point of view, that the classical kinetic is inefficient to describe sufficiently the emerging complex character as the system lives far from equilibrium. However recent evolution of the physical theory centered on non-linearity and fractality shows that the Prigogine point of view was so that much extreme as it was considered at the beginning.

After all, Tsallis q – extension of statistics [29] and the fractal extension for dynamics of complex systems as it has been developed by Nottale [6], El Naschie [4], Castro [7], Tarasov [12], Zaslavsky [38], Milovanov [32], El Nabulsi [13], Cresson [14], Coldfain [15], Chen [39], and others scientists, they are the double face of a unified novel theoretical framework, and they constitute

the appropriate base for the modern study of non-equilibrium dynamics as the q -statistics is related at its foundation to the underlying fractal dynamics of the non-equilibrium states.

For complex systems near equilibrium the underlying dynamics and the statistics are Gaussian as it is caused by a normal Langevin type stochastic process with a white noise Gaussian component. The normal Langevin stochastic equation corresponds to the probabilistic description of dynamics by the well-known normal Fokker – Planck equation. For Gaussian processes only the moments-cumulants of first and second order are non-zero, while the central limit theorem inhibits the development of long range correlations and macroscopic self-organization, as any kind of fluctuation quenches out exponentially to the normal distribution. Also at equilibrium, the dynamical attractive phase space is practically infinite dimensional as the system state evolves in all dimensions according to the famous ergodic theorem of Boltzmann – Gibbs statistics. However, in Tsallis q – statistics even for the case of $q = 1$ (corresponding to Gaussian process) the non-extensive character permits the development of long range correlations produced by equilibrium phase transition multi-scale processes according to the Wilson RGT [40]. From this point of view, the classical mechanics (particles and fields), including also general relativity theory, as well as the quantum mechanics – quantum field theories, all of them are nothing else than a near thermodynamical equilibrium approximation of a wider theory of physical reality, characterized as complexity theory. This theory can be related with a globally acting ordering process which produces the q – statistics and the fractal extension of dynamics classical or quantum.

Generally, the experimental observation of a complex system presupposes non-equilibrium process of the physical system which is subjected to observation, even if the system lives thermodynamically near to equilibrium states. Also experimental observation includes discovery and ascertainment of correlations in space and time, as the spatio-temporal correlations are related or they are caused by from the statistical mean values fluctuations. The theoretical interpretation prediction of observations as spatial and temporal correlations – fluctuations is based on statistical theory which relates the microscopic underlying dynamics with the macroscopic observations indentified to statistical moments and cumulants. Moreover, it is known that statistical moments and cumulants are related to the underlying dynamics by the derivatives of the partition function (Z) to the external source variables (J) [41].

From this point of view, the main problem of complexity theory is how to extend the knowledge from thermodynamical equilibrium states to the far from equilibrium physical states. The non-extensive q – statistics introduced by Tsallis [29] as the extension of Boltzmann – Gibbs equilibrium statistical theory is the appropriate base for the non-equilibrium extension of complexity theory. The far from equilibrium q – statistics can produce the q -partition function

(Z_q) and the corresponding q – moments and cumulants, in correspondence with Boltzmann – Gibbs statistical interpretation of thermodynamics.

The miraculous consistency of physical processes at all levels of physical reality, from the macroscopic to the microscopic level, as well as the inefficiency of existing theories to produce or to predict the harmony and hierarchy of structures inside structures from the macroscopic or the microscopic level of cosmos. This completely supports or justifies such new concepts as that indicated by Castro [7]: *“of a global ordering principle or that indicated by Prigogine, about the becoming before being at every level of physical reality.”* The problem however with such beautiful concepts is how to transform them into an experimentally testified scientific theory.

The Feynman path integral formulation of quantum theory after the introduction of imaginary time transformation by the Wick rotation indicates the inner relation of quantum dynamics and statistical mechanics [42, 43]. In this direction it was developed the stochastic and chaotic quantization theory [22-24, 44], which opened the road for the introduction of the macroscopic complexity and self-organization in the region of fundamental quantum field physical theory. The unified character of macroscopic and microscopic complexity is moreover verified by the fact that the n – point Green functions produced by the generating functional $W(J)$ of QFT after the Wick rotation can be transformed to n – point correlation functions produced by the partition function $Z(J)$ of the statistical theory. This indicates in reality the self-organization process underlying the creation and interaction of elementary particles, similarly to the development of correlations in complex systems and classical random fields Parisi [23]. For this reason lattice theory describes simultaneously microscopic and macroscopic complexity [40, 42].

In this way, instead of explaining the macroscopic complexity by a fundamental physical theory such as QFT, Superstring theory, M-theory or any other kind of fundamental theory we become witnesses of the opposite fact, according to what Prigogine was imagining. That is, macroscopic self-organization process and macroscopic complexity install their kingdom in the heart of reductionism and fundamentalism of physical theory. The Renormalizable field theories with the strong vehicle of Feynman diagrams that were used for the description of high energy interactions or the statistical theory of critical phenomena and the nonlinear dynamics of plasmas [45] lose their efficiency when the complexity of the process scales up [40].

Many scientist as Chang [31], Zelenyi [30], Milovanov [32], Ruzmaikin [33], Abramenko [36], Lui[46], Pavlos[37], in their studies indicate the statistical non-extensivity as well as the multi-scale, multi-fractal and anomalous – intermittent character of fields and particles in the space plasmas and other complex systems far from equilibrium. These results verify the concept that space plasmas and other complex systems dynamics are part of the more general theory of fractal dynamics which has been developed rapidly the last

years. Fractal dynamics are the modern fractal extension of physical theory in every level. On the other side the fractional generalization of modern physical theory is based on fractional calculus: fractional derivatives or integrals or fractional calculus of scalar or vector fields and fractional functional calculus [12, 39]. It is very impressive the efficiency of fractional calculus to describe complex and far from equilibrium systems which display scale-invariant properties, turbulent dissipation and long range correlations with memory preservation, while these characteristics cannot be illustrated by using traditional analytic and differentiable functions, as well as, ordinary differential operators. Fractional calculus permits the fractal generalization of Lagrange – Hamilton theory of Maxwell equations and Magnetohydrodynamics, the Fokker – Planck equation Liouville theory and BBGKI hierarchy, or the fractal generalization of QFT and path integration theory [12-15, 39].

According to the fractal generalization of dynamics and statistics we conserve the continuity of functions but abolish their differentiable character based on the fractal calculus which is the non-differentiable generalization of differentiable calculus. At the same time the deeper physical meaning of fractal calculus is the unification of microscopic and macroscopic dynamical theory at the base of the space – time fractality [4, 6, 39, 47-49]. Also the space-time is related to the fractality – multi-fractality of the dynamical phase – space, which can be manifested as non-equilibrium complexity and self-organization.

Moreover fractal dynamics leads to a global generalization of physical theory as it can be related with the infinite dimension Cantor space, as the microscopic essence of physical space – time, the non-commutative geometry and non-commutative Clifford manifolds and Clifford algebra, or the p-adic physics [4, 7, 13, 50, 51]. According to these new concepts introduced the last two decades at every level of physical reality we can describe in physics complex structure which cannot be reduced to underlying simple fundamental entities or underlying simple fundamental laws. Also, the non-commutative character of physical theory and geometry indicates [51, 52] that the scientific observation is nothing more than the observation of undivided complex structures in every level. Cantor was the founder of the fractal physics creating fractal sets by contraction of the homogenous real number set, while on the other side the set of real numbers can be understood as the result of the observational coarse graining [27, 50, 53]. From a philosophical point of view the mathematical forms are nothing else than self-organized complex structures of the mind-brain, in self-consistency with all the physical reality. On the other side, the generalization of Relativity theory to scale relativity by Nottale [6] or Castro [7] indicates the unification of microscopic and macroscopic dynamics through the fractal generalization of dynamics.

After all, we conjecture that the macroscopic self-organization related with the novel theory of complex dynamics, as they can be observed at far from equilibrium dynamical physical states, are the macroscopic emergence result of the microscopic complexity which can be enlarged as the system arrives at bifurcation or far from equilibrium critical points. That is, far from equilibrium the observed physical self-organization manifests the globally active ordering

principle to be in priority from local interactions processes. We could conjecture that is not far from truth the concept that local interactions themselves are nothing else than local manifestation of the holistically active ordering principle. That is what until now is known as fundamental laws is the equilibrium manifestation or approximation of the new and globally active ordering principle. This concept can be related with the fractal generalization of dynamics which is identified with the dynamics of correlations supported by Prigogine [1], Nicolis [2] and Balescu [54], as the generalization of Newtonian theory. This conjecture concerning the fractal unification of macroscopic and microscopic dynamics can be strongly supported by the Tsallis nonextensive q -statistics theory which is verified almost everywhere from the microscopic to the macroscopic level [7, 29]. From this point of view it is reasonable to support that the q -statistics and the fractal generalization of space plasma dynamics is the appropriate framework for the description of their non-equilibrium complexity.

2.2 Chaotic Dynamics and Statistics

The macroscopic description of complex systems can be approximated by non-linear partial differential equations of the general type:

$$\frac{\partial \bar{U}(\vec{x}, t)}{\partial t} = \bar{F}(\vec{u}, \vec{\lambda}) \quad (1)$$

where u belongs to a infinite dimensional state (phase) space which is a Hilbert functional space. Among the various control parameters, the plasma Reynold number is the one which controls the quiet static or the turbulent plasma states. Generally the control parameters measure the distance from the thermodynamical equilibrium as well as the critical or bifurcation points of the system for given and fixed values, depending upon the global mathematical structure of the dynamics. As the system passes its bifurcation points a rich variety of spatio-temporal patterns with distinct topological and dynamical profiles can be emerged such as: limit cycles or torus, chaotic or strange attractors, turbulence, Vortices, percolation states and other kinds of complex spatiotemporal structures [31, 49, 55-63].

Generally chaotic solutions of the mathematical system (1) transform the deterministic form of equation (1) to a stochastic non-linear stochastic system:

$$\frac{\partial \vec{u}}{\partial t} = \bar{\Phi}(\vec{u}, \vec{\lambda}) + \bar{\delta}(\vec{x}, t) \quad (2)$$

where $\bar{\delta}(\vec{x}, t)$ corresponds to the random force fields produced by strong chaoticity [64, 65].

The non-linear mathematical systems (1-2) include mathematical solutions which can represent plethora of non-equilibrium physical states included in

mechanical, electromagnetic or chemical and other physical systems which are study here.

The random components ($\delta(\vec{x}, t)$) are related to the BBGKY hierarchy:

$$\frac{\partial f_q}{\partial t} = [H_q, f_q] + S_q, q = 1, 2, \dots, N \quad (3)$$

where f_q is the q -particle distribution function, H_q is the q -th approximation of the Hamiltonian q -th correlations and S_q is the statistical term including correlations of higher than q -orders [45, 65].

The non-linear mathematical systems (1, 2) correspond to the new science known today as complexity science. This new science has a universal character, including an unsolved scientific and conceptual controversy which is continuously spreading in all directions of the physical reality and concerns the integrability or computability of the dynamics [66]. This universality is something supported by many scientists after the Poincare discovery of chaos and its non-integrability as is it shown in physical sciences by the work of Prigogine, Nicolis, Yankov and others [1, 2, 66] in reality. Non-linearity and chaos is the top of a hidden mountain including new physical and mathematical concepts such as fractal calculus, p-adic physical theory, non-commutative geometry, fuzzy anomalous topologies fractal space-time etc [4, 7, 12-15, 38, 39, 50-52]. These new mathematical concepts obtain their physical power when the physical system lives far from equilibrium.

After this and, by following the traditional point of view of physical science we arrive at the central conceptual problem of complexity science. That is, how is it possible that the local interactions in a spatially distributed physical system can cause long range correlations or how they can create complex spatiotemporal coherent patterns as the previous non-linear mathematical systems reveal, when they are solved arithmetically, or in situ observations reveal in space plasma systems. For non-equilibrium physical systems the above questions make us to ask how the development of complex structures and long range spatio-temporal correlations can be explained and described by local interactions of particles and fields. At a first glance the problem looks simple supposing that it can be explained by the self-consistent particle-fields classical interactions. However the existed rich phenomenology of complex non-equilibrium phenomena reveals the non-classical and strange character of the universal non-equilibrium critical dynamics [31, 35].

In the following and for the better understanding of the new concepts we follow the road of non-equilibrium statistical theory [31, 36]

The stochastic Langevin equations (11, 13, 17) can take the general form:

$$\frac{\partial u_i}{\partial t} = -\Gamma(\vec{x}) \frac{\delta H}{\delta u_i(\vec{x}, t)} + \Gamma(\vec{x}) n_i(\vec{x}, t) \quad (4)$$

where H is the Hamiltonian of the system, $\delta H / \delta u_i$ its functional derivative, Γ is a transport coefficient and n_i are the components of a Gaussian white noise:

$$\left. \begin{aligned} \langle n_i(\vec{x}, t) \rangle &= 0 \\ \langle n_i(\vec{x}, t) n_j(\vec{x}', t') \rangle &= 2\Gamma(\vec{x}) \delta_{ij} \delta(\vec{x} - \vec{x}') \delta(t - t') \end{aligned} \right\} \quad (5)$$

[31, 65, 67, 68]. The above stochastic Langevin Hamiltonian equation (18) can be related to a probabilistic Fokker – Planck equation [31]:

$$\frac{1}{\Gamma(\vec{x})} \frac{\partial P}{\partial t} = \frac{\delta}{\delta \vec{u}} \cdot \left(\frac{\delta H}{\delta \vec{u}} P + \frac{\delta}{\delta \vec{u}} [\Gamma(\vec{x}) P] \right) \quad (6)$$

where $P = P(\{u_i(\vec{x}, t)\}, t)$ is the probability distribution function of the dynamical configuration $\{u_i(\vec{x}, t)\}$ of the system at time t . The solution of the Fokker – Planck equation can be obtained as a functional path integral in the state space $\{u_i(\vec{x})\}$:

$$P(\{u_i(\vec{x})\}, t) \square \int \Delta \vec{Q} \exp(-S) P_0(\{u_i(\vec{x})\}, t_0) \quad (7)$$

where $P_0(\{u_i(\vec{x})\}, t_0)$ is the initial probability distribution function in the extended configuration state space and $S = i \int L dt$ is the stochastic action of the system obtained by the time integration of its stochastic Lagrangian (L) [31, 69]. The stationary solution of the Fokker – Planck equation corresponds to the statistical minimum of the action and corresponds to a Gaussian state:

$$P(\{u_i\}) \square \exp\left[-(1/\Gamma) H(\{u_i\})\right] \quad (8)$$

The path integration in the configuration field state space corresponds to the integration of the path probability for all the possible paths which start at the configuration state $\vec{u}(\vec{x}, t_0)$ of the system and arrive at the final configuration state $\vec{u}(\vec{x}, t)$. Langevin and F-P equations of classical statistics include a hidden relation with Feynman path integral formulation of QM [23, 31, 42, 43]. The F-P equation can be transformed to a Schrödinger equation:

$$i \frac{d}{dt} \hat{U}(t, t_0) = \hat{H} \cdot \hat{U}(t, t_0) \quad (9)$$

by an appropriate operator Hamiltonian extension $H(u(\vec{x}, t)) \Rightarrow \hat{H}(\hat{u}(\vec{x}, t))$ of the classical function (H) where now the field (u) is an operator distribution [31, 68]. From this point of view, the classical stochasticity of the macroscopic Langevin process can be considered

as caused by a macroscopic quanticity revealed by the complex system as the F-K probability distribution P satisfies the quantum relation:

$$P(u, t | u, t_0) = \langle u | \hat{U}(t, t_0) | u_0 \rangle \quad (10)$$

This generalization of classical stochastic process as a quantum process could explain the spontaneous development of long-range correlations at the macroscopic level as an enlargement of the quantum entanglement character at critical states of complex systems. This interpretation is in faithful agreement with the introduction of complexity in sub-quantum processes and the chaotic – stochastic quantization of field theory [22-24, 44], as well as with scale relativity principles [6, 7, 49] and fractal extension of dynamics [4, 12, 13-15, 39] or the older Prigogine self-organization theory [1]. Here, we can argue in addition to previous description that quantum mechanics is subject gradually to a fractal generalization [7, 12, 13-15]. The fractal generalization of QM-QFT drifts along also the tools of quantum theory into the correspondent generalization of RG theory or path integration and Feynman diagrams. This generalization implies also the generalization of statistical theory as the new road for the unification of macroscopic and microscopic complexity.

If $P[\bar{u}(\bar{x}, t)]$ is the probability of the entire field path in the field state space of the distributed system, then we can extend the theory of generating function of moments and cumulants for the probabilistic description of the paths [60, 69]. The n-point field correlation functions (n-points moments) can be estimated by using the field path probability distribution and field path (functional) integration:

$$\langle u(\bar{x}_1, t_1) u(\bar{x}_2, t_2) \dots u(\bar{x}_n, t_n) \rangle = \int \Delta \bar{u} P[\bar{u}(\bar{x}, t)] u(\bar{x}_1, t_1) \dots u(\bar{x}_n, t_n) \quad (11)$$

For Gaussian random processes which happen to be near equilibrium the $n - th$ point moments with $n > 2$ are zero, correspond to Markov processes while far from equilibrium it is possible non-Gaussian (with infinite nonzero moments) processes to be developed. According to Haken [69] the characteristic function (or generating function) of the probabilistic description of paths:

$$[u(x, t)] \equiv (u(\bar{x}_1, t_1), u(\bar{x}_2, t_2), \dots, u(\bar{x}_n, t_n)) \quad (12)$$

is given by the relation:

$$\Phi_{path}(j_1(t_1), j_2(t_2), \dots, j_n(t_n)) = \left\langle \exp i \sum_{i=1}^N j_i u(\bar{x}_i, t_i) \right\rangle_{path} \quad (13)$$

while the path cumulants $K_s(t_{a_1} \dots t_{a_s})$ are given by the relations:

$$\Phi_{path}(j_1(t_1), j_2(t_2), \dots, j_n(t_n)) = \exp \left\{ \sum_{s=1}^{\infty} \frac{i^s}{s!} \sum_{a_1, \dots, a_s=1}^n K_s(t_{a_1} \dots t_{a_s}) \cdot j_{a_1} \dots j_{a_s} \right\} \quad (14)$$

and the $n - point$ path moments are given by the functional derivatives:

$$\langle u(\bar{x}_1, t_1), u(\bar{x}_2, t_2), \dots, u(\bar{x}_n, t_n) \rangle = \left(\delta^n \Phi(\{j_i\}) / \delta j_1 \dots \delta j_n \right) t\{j_i\} = 0 \quad (15)$$

For Gaussian stochastic field processes the cumulants except the first two vanish ($k_3 = k_4 = \dots = 0$). For non-Gaussian processes it is possible to be developed long range correlations as the cumulants of higher than two order are non-zero [69]. This is the deeper meaning of non-equilibrium self-organization and ordering of complex systems. The characteristic function of the dynamical stochastic field system is related to the partition functions of its statistical description, while the cumulant development and multipoint moments generation can be related with the BBGKY statistical hierarchy of the statistics as well as with the Feynman diagrams approximation of the stochastic field system [41, 70]. For dynamical systems near equilibrium only the second order cumulants is non-vanishing, while far from equilibrium field fluctuations with higher – order non-vanishing cumulants can be developed.

Finally, we can understand how the non-linear dynamics correspond to self-organized states as the high-order (infinite) non-vanishing cumulants can produce the non-integrability of the dynamics. From this point of view the linear or non-linear instabilities of classical kinetic theory are inefficient to produce the non-Gaussian, holistic (non-local) and self-organized complex character of non-equilibrium dynamics. That is, far from equilibrium complex states can be developed including long range correlations of field and particles with non-Gaussian distributions of their dynamic variables. As we show in the next section such states reveal the necessity of new theoretical tools for their understanding which are much different from the classical linear or non-linear approximation of kinetic theory.

2.3 Strange attractors and Self-Organization

When the dynamics is strongly nonlinear then for the far from equilibrium processes it is possible to be created strong self-organization and intensive reduction of dimensionality of the state space, by an attracting low dimensional set with parallel development of long range correlations in space and time. The attractor can be periodic (limit cycle, limit m-torus), simply chaotic (monofractal) or strongly chaotic with multiscale and multifractal profile as well as attractors with weak chaotic profile known as SOC states. This spectrum of distinct dynamical profiles can be obtained as distinct critical points (critical states) of the nonlinear dynamics, after successive bifurcations as the control parameters change. The fixed points can be estimated by using a far from equilibrium renormalization process as it was indicated by Chang [31].

From this point of view phase transition processes can be developed by between different critical states, when the order parameters of the system are changing. The far from equilibrium development of chaotic (weak or strong) critical states include long range correlations and multiscale internal self organization. Now, these far from equilibrium self organized states, the

equilibrium BG statistics and BG entropy, are transformed and replaced by the Tsallis extension of q – statistics and Tsallis entropy. The extension of renormalization group theory and critical dynamics, under the q – extension of partition function, free energy and path integral approach has been also indicated [37, 70-72]. The multifractal structure of the chaotic attractors can be described by the generalized Rényi fractal dimensions:

$$D_{\bar{q}} = \frac{1}{\bar{q} - 1} \lim_{\lambda \rightarrow 0} \frac{\log \sum_{i=1}^{N\lambda} p_i^{\bar{q}}}{\log \lambda}, \tag{16}$$

where $p_i \propto \lambda^{\alpha(i)}$ is the local probability at the location (i) of the phase space, λ is the local size of phase space and $\alpha(i)$ is the local fractal dimension of the dynamics. The Rényi \bar{q} numbers (different from the q – index of Tsallis statistics) take values in the entire region $(-\infty, +\infty)$ of real numbers. The spectrum of distinct local fractal dimensions $\alpha(i)$ is given by the estimation of the function $f(\alpha)$ [73, 74] for which the following relations hold:

$$\sum p_i^{\bar{q}} = \int d\alpha' p(\alpha') \lambda^{-f(\alpha')} d\alpha' \tag{17}$$

$$\tau(\bar{q}) \equiv (\bar{q} - 1) D_{\bar{q}}^{\min} = \bar{q} \alpha - f(\alpha) \tag{18}$$

$$a(\bar{q}) = \frac{d[\tau(\bar{q})]}{d\bar{q}} \tag{19}$$

$$f(\alpha) = \bar{q} \alpha - \tau(\bar{q}), \tag{20}$$

The physical meaning of these magnitudes included in relations (2.15-2.18) can be obtained if we identify the multifractal attractor as a thermodynamical object, where its temperature (T), free energy (F), entropy (S) and internal energy (U) are related to the properties of the multifractal attractor as follows:

$$\left. \begin{aligned} \bar{q} &\Rightarrow \frac{1}{T}, & \tau(\bar{q}) &= (\bar{q} - 1) D_{\bar{q}} \Rightarrow F \\ \alpha &\Rightarrow U, & f(\alpha) &\Rightarrow S \end{aligned} \right\} \tag{21}$$

This correspondence presents the relations (2.17 -2.19) as a thermodynamical Legendre transform [75]. When \bar{q} increases to infinite $(+\infty)$, which means,

that we freeze the system ($T_{(q=+\infty)} \rightarrow 0$), then the trajectories (fluid lines) are closing on the attractor set, causing large probability values at regions of low fractal dimension, where $\alpha = \alpha_{\min}$ and $D_{\bar{q}} = D_{-\infty}$. Oppositely, when

\bar{q} decreases to infinite ($-\infty$), that is we warm up the system ($T_{(q=-\infty)} \rightarrow 0$) then the trajectories are spread out at regions of high fractal dimension ($\alpha \Rightarrow \alpha_{\max}$). Also for $\bar{q}' > \bar{q}$ we have $D_{\bar{q}'} < D_{\bar{q}}$ and $D_{\bar{q}} \Rightarrow D_{+\infty} (D_{-\infty})$ for $\alpha \Rightarrow \alpha_{\min} (\alpha_{\max})$ correspondingly. However, the above description presents only a weak or limited analogy between multifractal and thermodynamical objects. The real thermodynamical character of the multifractal objects and multiscale dynamics was discovered after the definition by Tsallis [29] of the q -entropy related with the q -statistics as it was summarized previously in relations (2.1-2.13).

2.4 Intermittent Turbulence

According to previous description dissipative nonlinear dynamics can produce self-organization and long range correlations in space and time. In this case we can imagine the mirroring relationship between the phase space multifractal attractor and the corresponding multifractal turbulence dissipation process of the dynamical system in the physical space. Multifractality and multiscaling interaction, chaoticity and mixing or diffusion (normal or anomalous), all of them can be manifested in both the state (phase) space and the physical (natural) space as the mirroring of the same complex dynamics. We could say that turbulence is for complexity theory, what the blackbody radiation was for quantum theory, as all previous characteristics can be observed in turbulent states. The theoretical description of turbulence in the physical space is based upon the concept of the invariance of the HD or MHD equations upon scaling transformations to the space-time variables (\vec{X}, t) and velocity (\vec{U}):

$$\vec{X}' = \lambda \vec{X}, \quad \vec{U}' = \lambda^{\alpha/3} \vec{U}, \quad t' = \lambda^{1-\alpha/3} t \quad (22)$$

and corresponding similar scaling relations for other physical variables [45, 76]. Under these scale transformations the dissipation rate of turbulent kinetic or dynamical field energy E_n (averaged over a scale $l_n = l_o \delta_n = R_o \delta_n$) rescales as \mathcal{E}_n :

$$\mathcal{E}_n \propto \mathcal{E}_0 (l_n \setminus l_0)^{\alpha-1} \quad (23)$$

Kolmogorov [77] assumes no intermittency as the locally averaged dissipation rate, in reality a random variable, is independent of the averaging domain. This means in the new terminology of Tsallis theory that Tsallis q -indices satisfy the relation $q = 1$ for the turbulent dynamics in the three dimensional space. That is the multifractal (intermittency) character of the HD or the MHD dynamics consists in supposing that the scaling exponent α included in relations (2.20, 2.21) takes on different values at different interwoven fractal subsets of the d -dimensional physical space in which the dissipation field is

embedded. The exponent α and for values $a < d$ is related with the degree of singularity in the field's gradient $(\frac{\partial A(x)}{\partial x})$ in the d – dimensional natural space [78]. The gradient singularities cause the anomalous diffusion in physical or in phase space of the dynamics. The total dissipation occurring in a d – dimensional space of size l_n scales also with a global dimension $D_{\bar{q}}$ for powers of different order \bar{q} as follows:

$$\sum_n \varepsilon_n^{\bar{q}} l_n^d \square l_n^{(\bar{q}-1)D_{\bar{q}}} = l_n^{\tau(\bar{q})} \tag{24}$$

Supposing that the local fractal dimension of the set $dn(a)$ which corresponds to the density of the scaling exponents in the region $(\alpha, \alpha + d\alpha)$ is a function $f_d(a)$ according to the relation:

$$dn(\alpha) \square \ln^{-f_d(\alpha)} da \tag{25}$$

where d indicates the dimension of the embedding space, then we can conclude the Legendre transformation between the mass exponent $\tau(\bar{q})$ and the multifractal spectrum $f_d(a)$:

$$\left. \begin{aligned} f_d(a) &= a\bar{q} - (\bar{q} - 1)(D_{\bar{q}} - d + 1) + d - 1 \\ a &= \frac{d}{d\bar{q}} [(\bar{q} - 1)(D_{\bar{q}} - d + 1)] \end{aligned} \right\} \tag{26}$$

For linear intersections of the dissipation field, that is $d = 1$ the Legendre transformation is given as follows:

$$f(a) = a\bar{q} - \tau(\bar{q}), \quad a = \frac{d}{d\bar{q}} [(q - 1)D_q] = \frac{d}{d\bar{q}} \tau(\bar{q}), \quad \bar{q} = \frac{df(a)}{da} \tag{27}$$

The relations (24-27) describe the multifractal and multiscale turbulent process in the physical state. The relations (16-19) describe the multifractal and multiscale process on the attracting set of the phase space. From this physical point of view, we suppose the physical identification of the magnitudes $D_{\bar{q}}, a, f(a)$ and $\tau(\bar{q})$ estimates in the physical and the corresponding phase space of the dynamics. By using experimental timeseries we can construct the function $D_{\bar{q}}$ of the generalized Rényi d – dimensional space dimensions, while the relations (26) allow the calculation of the fractal exponent (a) and the corresponding multifractal spectrum $f_d(a)$. For homogeneous fractals of the turbulent dynamics the generalized dimension spectrum $D_{\bar{q}}$ is constant and equal to the fractal dimension, of the support [76]. Kolmogorov [79] supposed that $D_{\bar{q}}$ does not depend on \bar{q} as the dimension of the fractal support is

$D_q = 3$. In this case the multifractal spectrum consists of the single point ($a = 1$ and $f(1) = 3$). The singularities of degree (a) of the dissipated fields, fill the physical space of dimension d with a fractal dimension $F(a)$, while the probability $P(a)da$, to find a point of singularity (a) is specified by the probability density $P(a)da \propto \ln^{-d-F(a)}$. The filling space fractal dimension $F(a)$ is related with the multifractal spectrum function $f_d(a) = F(a) - (d - 1)$, while according to the distribution function $\Pi_{dis}(\varepsilon_n)$ of the energy transfer rate associated with the singularity a it corresponds to the singularity probability as $\Pi_{dis}(\varepsilon_n)d\varepsilon_n = P(a)da$ [78].

Moreover the partition function $\sum_i P_i^q$ of the Rényi fractal dimensions estimated by the experimental timeseries includes information for the local and global dissipation process of the turbulent dynamics as well as for the local and global dynamics of the attractor set, as it is transformed to the partition function $\sum_i P_i^q = Z_q$ of the Tsallis q-statistic theory.

2.5 Fractal generalization of dynamics

Fractal integrals and fractal derivatives are related with the fractal contraction transformation of phase space as well as contraction transformation of space time in analogy with the fractal contraction transformation of the Cantor set [27, 53]. Also, the fractal extension of dynamics includes an extension of non-Gaussian scale invariance, related to the multiscale coupling and non-equilibrium extension of the renormalization group theory [38]. Moreover Tarasov [12], Coldfain [15], Cresson [14], El-Nabulsi [13] and other scientists generalized the classical or quantum dynamics in a continuation of the original breakthrough of El-Naschie [4], Nottale [6], Castro [7] and others concerning the fractal generalization of physical theory.

According to Tarasov [12] the fundamental theorem of Riemann – Liouville fractional calculus is the generalization of the known integer integral – derivative theorem as follows:

if
$$F(x) = {}_a I_x^a f(x) \tag{28}$$

then
$${}_a D_x^a F(x) = f(x) \tag{29}$$

where ${}_a I_x^a$ is the fractional Riemann – Liouville according to:

$${}_a I_x^a f(x) \equiv \frac{1}{\Gamma(a)} \int_a^x \frac{f(x')dx'}{(x-x')^{1-a}} \tag{30}$$

and ${}_a D_x^a$ is the Caputo fractional derivative according to:

$$\begin{aligned} {}_a D_x^a F(x) &= {}_a I_x^{n-a} D_x^n F(x) = \\ &= \frac{1}{\Gamma(n-a)} \int_a^x \frac{dx'}{(x-x')^{1+a-n}} \frac{d^n F(x)}{dx^n} \end{aligned} \tag{31}$$

for $f(x)$ a real valued function defined on a closed interval $[a, b]$.

In the next we summarize the basic concepts of the fractal generalization of dynamics as well as the fractal generalization of Liouville and MHD theory following Tarasov [12]. According to previous descriptions, the far from equilibrium dynamics includes fractal or multi-fractal distribution of fields and particles, as well as spatial fractal temporal distributions. This state can be described by the fractal generalization of classical theory: Lagrange and Hamilton equations of dynamics, Liouville theory, Fokker Planck equations and Bogoliubov hierarchy equations. In general, the fractal distribution of a physical quantity (M) obeys a power law relation:

$$M_D \propto M_0 \left(\frac{R}{R_0} \right)^D \tag{32}$$

where (M_D) is the fractal mass of the physical quantity (M) in a ball of radius (R) and (D) is the distribution fractal dimension. For a fractal distribution with local density $\rho(\vec{x})$ the fractal generalization of Euclidean space integration reads as follows:

$$M_D(W) = \int_W \rho(x) dV_D \tag{33}$$

where $dV_D = C_3(D, \vec{x}) dV_3$ (34)

and $C_3(D, \vec{x}) = \frac{2^{3-D} \Gamma(3/2)}{\Gamma(D/2)} |\vec{x}|^{D-3}$ (35)

Similarly the fractal generalization of surface and line Euclidean integration is obtained by using the relations:

$$dS_d = C_2(d, \vec{x}) dS_2 \tag{36}$$

$$C_2(d, \vec{x}) = \frac{2^{2-d}}{\Gamma(d/2)} |\vec{x}|^{d-2} \tag{37}$$

for the surface fractal integration and

$$dl_\gamma = C_1(\gamma, \vec{x}) dl_1 \tag{38}$$

$$C_1(\gamma, \vec{x}) = \frac{2^{1-\gamma} \Gamma(1/2)}{\Gamma(\gamma/2)} |\vec{x}|^{\gamma-1} \tag{39}$$

for the line fractal integration. By using the fractal generalization of integration and the corresponding generalized Gauss's and Stoke's theorems we can transform fractal integral laws to fractal and non-local differential laws [12]. The fractional generalization of classical dynamics (Hamilton Lagrange and Liouville theory) can be obtained by the fractional generalization of phase space quantitative description [12]. For this we use the fractional power of coordinates:

$$X^a = \text{sgn}(x)|x|^a \quad (40)$$

where $\text{sgn}(x)$ is equal to +1 for $x \geq 0$ and equal to -1 for $x < 0$.

The fractional measure $M_a(B)$ of a n -dimension phase space region (B) is given by the equation:

$$M_a(B) = \int_B g(a) d\mu_a(q, p) \quad (41)$$

where $d\mu_a(q, p)$ is a phase space volume element:

$$d\mu_a = \Pi \frac{dq_K^a \wedge dp_K^a}{[a\Gamma(a)]^2} \quad (42)$$

where $g(a)$ is a numerical multiplier and $dq_K^a \wedge dp_K^a$ means the wedge product.

The fractional Hamilton's approach can be obtained by the fractal generalization of the Hamilton action principle:

$$S = \int [pq - H(t, p, q)] dt \quad (43)$$

The fractal Hamilton equations:

$$\left(\frac{dq}{dt}\right)^a = \Gamma(2-a) p^{a-1} D_p^a H \quad (44)$$

$$D_t^a p = -D_q^a H \quad (45)$$

while the fractal generalization of the Lagrange's action principle:

$$S = \int L(t, q, u) dt \quad (46)$$

Corresponds to the fractal Lagrange equations:

$$D_q^a L - \Gamma(2-a) D_t^a [D_U^a L]_{U=\dot{q}} = 0 \quad (47)$$

Similar fractal generalization can be obtained for dissipative or non-Hamiltonian systems [12]. The fractal generalization of Liouville equation is given also as:

$$\frac{\partial \tilde{p}_N}{\partial t} = L_N \tilde{p}_N \quad (48)$$

where \tilde{p}_N and L_N are the fractal generalization of probability distribution function and the Liouville operator correspondingly. The fractal generalization of Bogoliubov hierarchy can be obtained by using the fractal Liouville equation as well as the fractal Fokker Planck hydrodynamical - magnetohydrodynamical approximations [12].

The fractal generalization of classical dynamical theory for dissipative systems includes the non-Gaussian statistics as the fractal generalization of Boltzmann – Gibbs statistics.

Finally the far from equilibrium statistical mechanics can be obtained by using the fractal extension of the path integral method. The fractional Green function of the dynamics is given by the fractal generalization of the path integral:

$$K_a(x_f, t_f; x_i, t_i) \square \int_{x_i}^{x_f} D[x_a(\tau)] \exp\left[\frac{i}{\hbar} S_a(\gamma)\right] \square \sum_{\{\gamma\}} \exp\left[\frac{i}{\hbar} S_a(\gamma)\right] \tag{49}$$

where K_a is the probability amplitude (fractal quantum mechanics) or the two point correlation function (statistical mechanics), $D[x_a(\tau)]$ means path integration on the sum $\{\gamma\}$ of fractal paths and $S_a(\gamma)$ is the fractal generalization of the action integral [13]:

$$S_a[\gamma] = \frac{1}{\Gamma(a)} \int_{x_i}^{x_f} L(D_\gamma^a q(\tau), \tau) (t - \tau)^{a-1} d\tau \tag{50}$$

2.6 The Highlights of Tsallis Theory

As we show in the next sections of this study, everywhere in space plasmas we can ascertain the presence of Tsallis statistics. This discovery is the continuation of a more general ascertainment of Tsallis q-extensive statistics from the macroscopic to the microscopic level [29].

In our understanding the Tsallis theory, more than a generalization of thermodynamics for chaotic and complex systems, or a non-equilibrium generalization of B-G statistics, can be considered as a strong theoretical vehicle for the unification of macroscopic and microscopic physical complexity. From this point of view Tsallis statistical theory is the other side of the modern fractal generalization of dynamics while its essence is nothing else than the efficiency of self-organization and development of long range correlations of coherent structures in complex systems.

From a general philosophical aspect, the Tsallis q-extension of statistics can be identified with the activity of an ordering principle in physical reality, which

cannot be exhausted with the local interactions in the physical systems, as we noticed in previous sections.

2.6.1 The non-extensive entropy (S_q)

It was for first time that Tsallis [1], inspired by multifractal analysis, conceived that the Boltzmann – Gibbs entropy:

$$S_{BG} = -K \sum p_i \ln p_i, \quad i = 1, 2, \dots, N \quad (51)$$

is inefficient to describe all the complexity of non-linear dynamical systems. The Boltzmann – Gibbs statistical theory presupposes ergodicity of the underlying dynamics in the system phase space. The complexity of dynamics which is far beyond the simple ergodic complexity, it can be described by Tsallis non-extensive statistics, based on the extended concept of q – entropy:

$$S_q = k \left(1 - \sum_{i=1}^N p_i^q \right) / (q-1) \quad (52)$$

for discrete state space or

$$S_q = k \left[1 - \int [p(x)]^q dx \right] / (q-1) \quad (53)$$

for continuous state space.

For a system of particles and fields with short range correlations inside their immediate neighborhood, the Tsallis q – entropy S_q asymptotically leads to Boltzmann – Gibbs entropy (S_{BG}) corresponding to the value of $q = 1$. For probabilistically dependent or correlated systems A, B it can be proven that:

$$\begin{aligned} S_q(A+B) &= S_q(A) + S_q(B/A) + (1-q)S_q(A)S_q(B/A) \\ &= S_q(B) + S_q(A/B) + (1-q)S_q(B)S_q(A/B) \end{aligned} \quad (54)$$

Where $S_q(A) \equiv S_q(\{p_i^A\})$, $S_q(B) \equiv S_q(\{p_i^B\})$, $S_q(B/A)$ and $S_q(A/B)$ are the conditional entropies of systems A, B [29]. When the systems are probabilistically independent, then relation (3.1.4) is transformed to:

$$S_q(A+B) = S_q(A) + S_q(B) + (1-q)S_q(A)S_q(B) \quad (55)$$

The dependent (independent) property corresponds to the relation:

$$p_{ij}^{A+B} \neq p_i^A p_j^B \quad (p_{ij}^{A+B} = p_i^A p_j^B) \quad (56)$$

Comparing the Boltzmann – Gibbs (S_{BG}) and Tsallis (S_q) entropies, we conclude that for non-existence of correlations S_{BG} is extensive whereas S_q

for $q \neq 1$ is non-extensive. In contrast, for global correlations, large regions of phase – space remain unoccupied. In this case S_q is non-extensive either $q = 1$ or $q \neq 1$.

2.6.2 The q – extension of statistics and Thermodynamics

Non-linearity can manifest its rich complex dynamics as the system is removed far from equilibrium. The Tsallis q – extension of statistics is indicated by the non-linear differential equation $dy / dx = y^q$. The solution of this equation includes the q – extension of exponential and logarithmic functions:

$$e_q^x = [1 + (1 - q)x]^{1/(1-q)} \tag{57}$$

$$\ln_q x = (x^{1-q} - 1) / (1 - q) \tag{58}$$

and

$$p_{opt}(x) = e_q^{-\beta_q[f(x)-F_q]} / \int dx' e_q^{-\beta_q[f(x')-F_q]} \tag{59}$$

for more general q – constraints of the forms $\langle f(x) \rangle_q = F_q$. In this way, Tsallis q – extension of statistical physics opened the road for the q – extension of thermodynamics and general critical dynamical theory as a non-linear system lives far from thermodynamical equilibrium. For the generalization of Boltzmann-Gibbs nonequilibrium statistics to Tsallis nonequilibrium q -statistics we follow Binney [41]. In the next we present q -extended relations, which can describe the non-equilibrium fluctuations and n – point correlation function (G) can be obtained by using the Tsallis partition function Z_q of the system as follows:

$$G_q^n(i_1, i_2, \dots, i_n) \equiv \langle s_{i_1}, s_{i_2}, \dots, s_{i_n} \rangle_q = \frac{1}{z} \frac{\partial^n Z_q}{\partial j_{i_1} \cdot \partial j_{i_2} \dots \partial j_{i_n}} \tag{60}$$

Where $\{s_i\}$ are the dynamical variables and $\{j_i\}$ their sources included in the effective – Lagrangian of the system. Correlation (Green) equations (62) describe discrete variables, the n – point correlations for continuous distribution of variables (random fields) are given by the functional derivatives of the functional partition as follows:

$$G_q^n(\bar{x}_1, \bar{x}_2, \dots, \bar{x}_n) \equiv \langle \varphi(\bar{x}_1)\varphi(\bar{x}_2)\dots\varphi(\bar{x}_n) \rangle_q = \frac{1}{Z} \frac{\delta}{\delta J(\bar{x}_1)} \dots \frac{\delta}{\delta J(\bar{x}_n)} Z_q(J) \tag{61}$$

where $\varphi(\bar{x})$ are random fields of the system variables and $j(\bar{x})$ their field sources. The connected n – point correlation functions G_i^n are given by:

$$G_q^n(\vec{x}_1, \vec{x}_2, \dots, \vec{x}_n) \equiv \frac{\delta}{\delta J(\vec{x}_1)} \dots \frac{\delta}{\delta J(\vec{x}_n)} \log Z_q(J) \quad (62)$$

The connected n – point correlations correspond to correlations that are due to internal interactions defined as [41]:

$$G_q^n(\vec{x}_1, \vec{x}_2, \dots, \vec{x}_n) \equiv \langle \varphi(\vec{x}_1) \dots \varphi(\vec{x}_n) \rangle_q - \langle \varphi(x_1) \dots \varphi(x_n) \rangle_q \quad (63)$$

The probability of the microscopic dynamical configurations is given by the general relation:

$$P(\text{conf}) = e^{-\beta S_{\text{conf}}} \quad (64)$$

where $\beta = 1/kT$ and S_{conf} is the action of the system, while the partition function Z of the system is given by the relation:

$$Z = \sum_{\text{conf}} e^{-\beta S_{\text{conf}}} \quad (65)$$

The q – extension of the above statistical theory can be obtained by the q – partition function Z_q . The q – partition function is related with the meta-equilibrium distribution of the canonical ensemble which is given by the relation:

$$p_i = e_q^{-\beta q(E_i - V_q)/Z_q} \quad (66)$$

with

$$Z_q = \sum_{\text{conf}} e_q^{-\beta q(E_i - V_q)} \quad (67)$$

and

$$\beta_q = \beta / \sum_{\text{conf}} p_i^q \quad (68)$$

where $\beta = 1/KT$ is the Lagrange parameter associated with the energy constraint:

$$\langle E \rangle_q \equiv \sum_{\text{conf}} p_i^q E_i / \sum_{\text{conf}} p_i^q = U_q \quad (69)$$

The q – extension of thermodynamics is related with the estimation of q – Free energy (F_q) the q – expectation value of internal energy (U_q) the q – specific heat (C_q) by using the q – partition function:

$$F_q \equiv U_q - TS_q = -\frac{1}{\beta} \ln qZ_q \quad (70)$$

$$U_q = \frac{\partial}{\partial \beta} \ln q Z_q, \frac{1}{T} = \frac{\partial S_q}{\partial U_q} \quad (71)$$

$$C_q \equiv T \frac{\partial \delta_q}{\partial T} = \frac{\partial U_q}{\partial T} = -T \frac{\partial^2 F_q}{\partial T^2} \quad (72)$$

2.6.3 The Tsallis q – extension of statistics via the fractal extension of dynamics

At the equilibrium thermodynamical state the underlying statistical dynamics is Gaussian ($q = 1$). As the system goes far from equilibrium the underlying statistical dynamics becomes non-Gaussian ($q \neq 1$). At the first case the phase space includes ergodic motion corresponding to normal diffusion process with mean-squared jump distances proportional to the time $\langle x^2 \rangle \propto t$ whereas far from equilibrium the phase space motion of the dynamics becomes chaotically self-organized corresponding to anomalous diffusion process with mean-squared jump distances $\langle x^2 \rangle \propto t^a$, with $a < 1$ for sub-diffusion and $a > 1$ for super-diffusion. The equilibrium normal-diffusion process is described by a chain equation of the Markov-type:

$$W(x_3, t_3; x_1, t_1) = \int dx_2 W(x_3, t_3; x_2, t_2) W(x_2, t_2; x_1, t_1) \quad (73)$$

where $W(x, t; x', t')$ is the probability density for the motion from the dynamical state (x', t') to the state (x, t) of the phase space. The Markov process can be related to a random differential Langevin equation with additive white noise and a corresponding Fokker – Planck probabilistic equation [38] by using the initial condition:

$$\lim_{\Delta t \rightarrow 0} W(x, y; \Delta t) = \delta(x - y) \quad (74)$$

This relation means no memory in the Markov process and help to obtain the expansion:

$$W(x, y; \Delta t) = \delta(x - y) + a(y; \Delta t) \delta'(x - y) + \frac{1}{2} b(y; \Delta t) \delta''(x - y) \quad (75)$$

where $A(y; \Delta t)$ and $B(y; \Delta t)$ are the first and second moment of the transfer probability function $W(x, y; \Delta t)$:

$$a(y; \Delta t) = \int dx (x - y) W(x, y; \Delta t) \equiv \langle \langle \Delta y \rangle \rangle \quad (76)$$

$$b(y; \Delta t) = \int dx (x - y)^2 W(x, y; \Delta t) \equiv \langle\langle (\Delta y)^2 \rangle\rangle \quad (77)$$

By using the normalization condition:

$$\int dy W(x, y; \Delta t) = 1 \quad (78)$$

we can obtain the relation:

$$a(y; \Delta t) = -\frac{1}{2} \frac{\partial b(y; \Delta t)}{\partial y} \quad (79)$$

The Fokker – Planck equation which corresponds to the Markov process can be obtained by using the relation:

$$\frac{\partial p(x, t)}{\partial t} = \lim_{\Delta t \rightarrow 0} \frac{1}{\Delta t} \left[\int_{-\infty}^{+\infty} dy W(x, y; \Delta t) p(y, t) - p(x, t) \right] \quad (80)$$

where $p(x, t) \equiv W(x, x_0; t)$ is the probability distribution function of the state (x, t) corresponding to large time asymptotic, as follows:

$$\frac{\partial P(x, t)}{\partial t} = -\nabla_x (AP(x, t)) + \frac{1}{2} \nabla_x^2 (BP(x, t)) \quad (81)$$

where $A(x)$ is the flow coefficient:

$$A(x, t) \equiv \lim_{\Delta t \rightarrow 0} \frac{1}{\Delta t} \langle\langle \Delta x \rangle\rangle \quad (82)$$

and $B(x, t)$ is the diffusion coefficient:

$$B(\bar{x}, t) \equiv \lim_{\Delta t \rightarrow 0} \frac{1}{\Delta t} \langle\langle \Delta x^2 \rangle\rangle \quad (83)$$

The Markov process is a Gaussian process as the moments $\lim_{\Delta t \rightarrow 0} \langle\langle \Delta x^m \rangle\rangle$ for $m > 2$ are zero [63]. The stationary solutions of F-P equation satisfy the extremal condition of Boltzmann – Gibbs entropy:

$$S_{BG} = -K_B \int p(x) \ln p(x) dx \quad (84)$$

corresponding to the known Gaussian distribution:

$$p(x) \propto \exp(-x^2 / 2\sigma^2) \quad (85)$$

According to Zaslavsky [38] the fractal extension of Fokker – Planck (F-P) equation can be produced by the scale invariance principle applied for the phase space of the non-equilibrium dynamics. As it was shown by Zaslavsky for strong chaos the phase space includes self similar structures of islands inside

islands dived in the stochastic sea [38]. The fractal extension of the FPK equation (FFPK) can be derived after the application of a Renormalization group of anomalous kinetics (RGK):

$$\hat{R}_K : s' = \lambda_s S, t' = \lambda_t t$$

where s is a spatial variable and t is the time.

Correspondingly to the Markov process equations:

$$\frac{\partial^\beta p(\xi, t)}{\partial t^\beta} \equiv \lim_{\Delta t \rightarrow 0} \frac{1}{(\Delta t)^\beta} [W(\xi, \xi_0; t + \Delta t) - W(\xi, \xi_0; t)] \quad (86)$$

$$W(\xi, n; \Delta t) = \delta(\xi - n) + A(n; \Delta t) \delta^{(a)}(\xi - n) + \frac{1}{2} B(n; \Delta t) \delta^{(2a)}(\xi - n) + \dots \quad (87)$$

as the space-time variations of probability W are considered on fractal space-time variables (t, ξ) with dimensions (β, a) .

For fractal dynamics $a(n; \Delta t)$, $b(n; \Delta t)$ satisfy the equations:

$$a(n; \Delta t) = \int |n - \xi|^\alpha W(\xi, n; \Delta t) d\xi \equiv \langle \langle |\Delta \xi|^\alpha \rangle \rangle \quad (88)$$

$$b(n; \Delta t) = \int |n - \xi|^{2\alpha} W(\xi, n; \Delta t) d\xi \equiv \langle \langle |\Delta \xi|^{2\alpha} \rangle \rangle \quad (89)$$

and the limit equations:

$$A(\xi) = \lim_{\Delta t \rightarrow 0} \frac{a(\xi; \Delta t)}{(\Delta t)^\beta} \quad (90)$$

$$B(\xi) = \lim_{\Delta t \rightarrow 0} \frac{b(\xi; \Delta t)}{(\Delta t)^\beta} \quad (91)$$

By them we can obtain the FFPK equation.

Far from equilibrium the non-linear dynamics can produce phase space topologies corresponding to various complex attractors of the dynamics. In this case the extended complexity of the dynamics corresponds to the generalized strange kinetic Langevin equation with correlated and multiplicative noise components and extended fractal Fokker – Planck - Kolmogorov equation (FFPK) [38, 80]. The q – extension of statistics by Tsallis can be related with the strange kinetics and the fractal extension of dynamics through the Levy process:

$$P(x_n, t_n; x_0, t_0) = \int dx_1 \dots dx_{N-1} P(x_N, t_N; x_{N-1}, t_{N-1}) \dots P(x_1, t_1; x_0, t_0) \quad (92)$$

The Levy process can be described by the fractal F-P equation:

$$\frac{\partial^\beta P(x, t)}{\partial t^\beta} = \frac{\partial^a}{\partial (-x)^a} [A(x)P(x, t)] + \frac{\partial^{a+1}}{\partial (-x)^{a+1}} [B(x)P(x, t)] \quad (93)$$

where $\partial^\beta / \partial t^\beta$, $\partial^\alpha / \partial (-x)^\alpha$ and $\partial^{\alpha+1} / \partial (-x)^{\alpha+1}$ are the fractal time and space derivatives correspondingly [38]. The stationary solution of the F F-P equation for large x is the Levy distribution $P(x) \propto x^{-(1+\gamma)}$. The Levy distribution coincides with the Tsallis q -extended optimum distribution (3.2.4) for $q = (3 + \gamma) / (1 + \gamma)$. The fractal extension of dynamics takes into account non-local effects caused by the topological heterogeneity and fractality of the self-organized phase – space. Also the fractal geometry and the complex topology of the phase – space introduce memory in the complex dynamics which can be manifested as creation of long range correlations, while, oppositely, in Markov process we have complete absence of memory.

In general, the fractal extension of dynamics as it was done until now from Zaslavsky, Tarasov and other scientists indicate the internal consistency of Tsallis q -statistics as the non-equilibrium extension of B-G statistics with the fractal extension of classical and quantum dynamics. Concerning the space plasmas the fractal character of their dynamics has been indicated also by many scientists. Indicatively, we refer the fractal properties of sunspots and their formation by fractal aggregates as it was shown by Zelenyi and Milovanov [30, 32], the anomalous diffusion and intermittent turbulence of the solar convection and photospheric motion shown by Ruzmakin et al. [33], the multi-fractal and multi-scale character of space plasmas indicated by Lui [46] and Pavlos et al. [37].

Finally we must notice the fact that the fractal extension of dynamics identifies the fractal distribution of a physical magnitude in space and time according to the scaling relation $M(R) \propto R^a$ with the fractional integration as an integration in a fractal space [12]. From this point of view it could be possible to conclude the novel concept that the non-equilibrium q -extension of statistics and the fractal extension of dynamics are related with the fractal space and time themselves [6, 39, 80].

2.6.4 Fractal acceleration and fractal energy dissipation

The problem of kinetic or magnetic energy dissipation in fluid and plasmas as well as the bursty acceleration processes of particles at flares, magnetospheric plasma sheet and other regions of space plasmas is an old and yet resisting problem of fluids or space plasma science.

Normal Gaussian diffusion process described by the Fokker – Planck equation is unable to explain either the intermittent turbulence in fluids or the bursty character of energetic particle acceleration following the bursty development of inductive electric fields after turbulent magnetic flux change in plasmas [81]. However the fractal extension of dynamics and Tsallis extension of statistics

indicate the possibility for a mechanism of fractal dissipation and fractal acceleration process in fluids and plasmas.

According to Tsallis statistics and fractal dynamics the super-diffusion process:

$$\langle R^2 \rangle \propto t^\gamma \tag{94}$$

with $\gamma > 1$ ($\gamma = 1$ for normal diffusion) can be developed at systems far from equilibrium. Such process is known as intermittent turbulence or as anomalous diffusion which can be caused by Levy flight process included in fractal dynamics and fractal Fokker – Planck Kolmogorov equation (FFPK). The solution of FFPK equation [38] corresponds to double (temporal, spatial) fractal characteristic function:

$$P(k, t) = \exp(-constxt^\beta |k|a) \tag{95}$$

Where $P(k, t)$ is the Fourier transform of asymptotic distribution function:

$$P(\xi, t) \propto constxt^\beta / \xi^{1+\alpha}, (\xi \rightarrow \infty) \tag{96}$$

This distribution is scale invariant with mean displacement:

$$\langle |\xi|^\alpha \rangle \propto constxt^\beta, (t \rightarrow \infty) \tag{97}$$

According to this description, the flights of multi-scale and multi-fractal profile can explain the intermittent turbulence of fluids, the bursty character of magnetic energy dissipation and the bursty character of induced electric fields and charged particle acceleration in space plasmas as well as the non-Gaussian dynamics of brain-heart dynamics. The fractal motion of charged particles across the fractal and intermittent topologies of magnetic – electric fields is the essence of strange kinetic [38, 80]. Strange kinetics permits the development of local sources with spatial fractal – intermittent condensation of induced electric-magnetic fields in brain, heart and plasmas parallely with fractal – intermittent dissipation of magnetic field energy in plasmas and fractal acceleration of charged particles. Such kinds of strange accelerators in plasmas can be understood by using the Zaslavsky studies for Hamiltonian chaos in anomalous multi-fractal and multi-scale topologies of phase space [38]. Generally the anomalous topology of phase space and fractional Hamiltonian dynamics correspond to dissipative non-Hamiltonian dynamics in the usual phase space [12]. The most important character of fractal kinetics is the wandering of the dynamical state through the gaps of cantori which creates effective barriers for diffusion and long range Levy flights in trapping regions of the phase space. Similar Levy flights processes can be developed by the fractal dynamics and intermittent turbulence of the complex systems.

In this theoretical framework it is expected the existence of Tsallis non extensive entropy and q-statistics in non-equilibrium distributed complex systems as, fluids, plasmas or brain and heart systems which are studied in the next section of this work. The fractal dynamics corresponding to the non-extensive Tsallis q – statistical character of the probability distributions in the

distributed complex systems indicate the development of a self-organized and globally correlated parts of active regions in the distributed dynamics. This character can be related also with deterministic low dimensional chaotic profile of the active regions according to Pavlos et al. [37,].

3. Theoretical expectations through Tsallis statistical theory and fractal dynamics

Tsallis q – statistics as well as the non-equilibrium fractal dynamics indicate the multi-scale, multi-fractal chaotic and holistic dynamics of space plasmas. Before we present experimental verification of the theoretical concepts described in previous studies as concerns space plasmas in this section we summarize the most significant theoretical expectations.

3.1 The q – triplet of Tsallis

The non-extensive statistical theory is based mathematically on the nonlinear equation:

$$\frac{dy}{dx} = y^q, (y(0) = 1, q \in \mathfrak{R}) \quad (98)$$

with solution the q – exponential function defined previously in equation (2.2). The solution of this equation can be realized in three distinct ways included in the q – triplet of Tsallis: $(q_{sen}, q_{stat}, q_{rel})$. These quantities characterize three physical processes which are summarized here, while the q – triplet values characterize the attractor set of the dynamics in the phase space of the dynamics and they can change when the dynamics of the system is attracted to another attractor set of the phase space. The equation (2.36) for $q = 1$ corresponds to the case of equilibrium Gaussian Boltzmann-Gibbs (BG) world [35, 36]. In this case of equilibrium BG world the q – triplet of Tsallis is simplified to $(q_{sen} = 1, q_{stat} = 1, q_{rel} = 1)$.

a. The q_{stat} index and the non-extensive physical states

According to [35, 36] the long range correlated metaequilibrium non-extensive physical process can be described by the nonlinear differential equation:

$$\frac{d(p_i Z_{stat})}{dE_i} = -\beta q_{stat} (p_i Z_{stat})^{q_{stat}} \quad (99)$$

The solution of this equation corresponds to the probability distribution:

$$p_i = e_{q_{stat}}^{-\beta_{stat} E_i} / Z_{q_{stat}} \quad (100)$$

where $\beta_{q_{stat}} = \frac{1}{KT_{stat}}$, $Z_{stat} = \sum_j e^{-\beta_{q_{stat}} E_j}$.

Then the probability distribution function is given by the relations:

$$p_i \propto [1 - (1 - q)\beta_{q_{stat}} E_i]^{1/1 - q_{stat}} \tag{101}$$

for discrete energy states $\{E_i\}$ by the relation:

$$p(x) \propto [1 - (1 - q)\beta_{q_{stat}} x^2]^{1/1 - q_{stat}} \tag{102}$$

for continuous X states $\{X\}$, where the values of the magnitude X correspond to the state points of the phase space.

The above distributions functions (2.46, 2.47) correspond to the attracting stationary solution of the extended (anomalous) diffusion equation related with the nonlinear dynamics of system [36]. The stationary solutions $P(x)$ describe the probabilistic character of the dynamics on the attractor set of the phase space. The non-equilibrium dynamics can be evolved on distinct attractor sets depending upon the control parameters values, while the q_{stat} exponent can change as the attractor set of the dynamics changes.

b. The q_{sen} index and the entropy production process

The entropy production process is related to the general profile of the attractor set of the dynamics. The profile of the attractor can be described by its multifractality as well as by its sensitivity to initial conditions. The sensitivity to initial conditions can be described as follows:

$$\frac{d\xi}{d\tau} = \lambda_1 \xi + (\lambda_q - \lambda_1) \xi^q \tag{103}$$

where ξ describes the deviation of trajectories in the phase space by the relation: $\xi \equiv \lim_{\Delta(x) \rightarrow 0} \{\Delta x(t) \setminus \Delta x(0)\}$ and $\Delta x(t)$ is the distance of neighboring trajectories [82]. The solution of equation (2.41) is given by:

$$\xi = \left[1 - \frac{\lambda q_{sen}}{\lambda_1} + \frac{\lambda q_{sen}}{\lambda_1} e^{(1 - q_{sen}) \lambda_1 t} \right]^{\frac{1}{1 - q}} \tag{104}$$

The q_{sen} exponent can be also related with the multifractal profile of the attractor set by the relation:

$$\frac{1}{q_{sen}} = \frac{1}{a_{min}} - \frac{1}{a_{max}} \tag{105}$$

where a_{\min} (a_{\max}) corresponds to the zero points of the multifractal exponent spectrum $f(a)$ [36, 79, 82]. That is $f(a_{\min}) = f(a_{\max}) = 0$.

The deviations of neighboring trajectories as well as the multifractal character of the dynamical attractor set in the system phase space are related to the chaotic phenomenon of entropy production according to Kolmogorov – Sinai entropy production theory and the Pesin theorem [36]. The q – entropy production is summarized in the equation:

$$K_q \equiv \lim_{t \rightarrow \infty} \lim_{W \rightarrow \infty} \lim_{N \rightarrow \infty} \frac{\langle S_q \rangle (t)}{t}. \quad (106)$$

The entropy production (dS_q / t) is identified with K_q , as W are the number of non-overlapping little windows in phase space and N the state points in the windows according to the relation $\sum_{i=1}^W N_i = N$. The S_q entropy is estimated by the probabilities $P_i(t) \equiv N_i(t) / N$. According to Tsallis the entropy production K_q is finite only for $q = q_{sen}$ [36, 82].

c. The q_{rel} index and the relaxation process

The thermodynamical fluctuation – dissipation theory [63] is based on the Einstein original diffusion theory (Brownian motion theory). Diffusion process is the physical mechanism for extremization of entropy. If ΔS denote the deviation of entropy from its equilibrium value S_0 , then the probability of the proposed fluctuation that may occur is given by:

$$P \propto \exp(\Delta S / k). \quad (107)$$

The Einstein – Smoluchowski theory of Brownian motion was extended to the general Fokker – Planck diffusion theory of non-equilibrium processes. The potential of Fokker – Planck equation may include many metaequilibrium stationary states near or far away from the basic thermodynamical equilibrium state. Macroscopically, the relaxation to the equilibrium stationary state can be described by the form of general equation as follows:

$$\frac{d\Omega}{d\tau} \propto -\frac{1}{\tau} \Omega, \quad (108)$$

where $\Omega(t) \equiv [O(t) - O(\infty)] / [O(0) - O(\infty)]$ describes the relaxation of the macroscopic observable $O(t)$ relaxing towards its stationary state value. The non-extensive generalization of fluctuation – dissipation theory is related to the general correlated anomalous diffusion processes [36]. Now, the equilibrium relaxation process (2.46) is transformed to the metaequilibrium non-extensive relaxation process:

$$\frac{d\Omega}{dt} = -\frac{1}{T_{q_{rel}}} \Omega^{q_{rel}} \tag{109}$$

the solution of this equation is given by:

$$\Omega(t) \propto e^{-t/\tau_{rel}} \tag{110}$$

The autocorrelation function $C(t)$ or the mutual information $I(t)$ can be used as candidate observables $\Omega(t)$ for the estimation of q_{rel} . However, in contrast to the linear profile of the correlation function, the mutual information includes the non linearity of the underlying dynamics and it is proposed as a more faithful index of the relaxation process and the estimation of the Tsallis exponent q_{rel} .

3.2 Measures of Multifractal Intermittence Turbulence

In the following, we follow Arimitsu and Arimitsu [78] for the theoretical estimation of significant quantitative relations which can also be estimated experimentally. The probability singularity distribution $P(a)$ can be estimated as extremizing the Tsallis entropy functional S_q . According to Arimitsu and Arimitsu [78] the extremizing probability density function $P(a)$ is given as a q -exponential function:

$$P(a) = Z_q^{-1} \left[1 - (1-q) \frac{(a-a_0)^2}{2X/\ln 2} \right]^{\frac{1}{1-q}} \tag{111}$$

where the partition function Z_q is given by the relation:

$$Z_q = \sqrt{2X / [(1-q) \ln 2]} B(1/2, 2/1-q), \tag{112}$$

and $B(a, b)$ is the Beta function. The partition function Z_q as well as the quantities X and q can be estimated by using the following equations:

$$\left. \begin{aligned} \sqrt{2X} &= \left[\sqrt{a_0^2 + (1-q)^2} - (1-q) \right] / \sqrt{b} \\ b &= (1 - 2^{-(1-q)}) / [(1-q) \ln_2] \end{aligned} \right\} \tag{113}$$

We can conclude for the exponent's spectrum $f(a)$ by using the relation $P(a) \approx \ln^{-d-F(a)}$ as follows:

$$f(a) = D_0 + \log_2[1 - (1 - q) \frac{(a - a_0)^2}{2X/\ln 2}] / (1 - q)^{-1} \quad (114)$$

where a_0 corresponds to the q -expectation (mean) value of a through the relation:

$$\langle (a - a_0)^2 \rangle_q = \left(\int da P(a)^q (a - a_0)^q \right) / \int da P(a)^q \quad (115)$$

while the q -expectation value a_0 corresponds to the maximum of the function $f(a)$ as $df(a)/da|_{a_0} = 0$. For the Gaussian dynamics ($q \rightarrow 1$) we have mono-fractal spectrum $f(a_0) = D_0$. The mass exponent $\tau(\bar{q})$ can be also estimated by using the inverse Legendre transformation: $\tau(\bar{q}) = a\bar{q} - f(a)$ (relations 2.24 – 2.25) and the relation (2.29) as follows:

$$\tau(\bar{q}) = \bar{q}a_0 - 1 - \frac{2X\bar{q}^2}{1 + \sqrt{C_{\bar{q}}}} - \frac{1}{1 - q} [1 - \log_2(1 + \sqrt{C_{\bar{q}}})], \quad (116)$$

Where $C_{\bar{q}} = 1 + 2\bar{q}^2(1 - q)X \ln 2$.

The relation between a and q can be found by solving the Legendre transformation equation $\bar{q} = df(a)/da$. Also if we use the equation (2.29) we can obtain the relation:

$$a_{\bar{q}} - a_0 = (1 - \sqrt{C_{\bar{q}}}) / [\bar{q}(1 - q) \ln 2] \quad (117)$$

The q -index is related to the scaling transformations (2.20) of the multifractal nature of turbulence according to the relation $q = 1 - a$. Arimitsu and Arimitsu [78] estimated the q -index by analyzing the fully developed turbulence state in terms of Tsallis statistics as follows:

$$\frac{1}{1 - q} = \frac{1}{a_-} - \frac{1}{a_+} \quad (118)$$

where a_{\pm} satisfy the equation $f(a_{\pm}) = 0$ of the multifractal exponents spectrum $f(a)$. This relation can be used for the estimation of q_{sen}^- index included in the Tsallis q -triplet (see next section).

The above analysis based at the extremization of Tsallis entropy can be also used for the theoretical estimation of the structure functions scaling exponent spectrum $J(p)$ of the $S_p(\tau)$, where $p = 1, 2, 3, 4, \dots$. The structure functions were first introduced by Kolmogorov [79] defined as statistical moments of the field increments:

$$S_p(\vec{r}) = \langle |u(\vec{x} + \vec{d}) - u(\vec{x})|^p \rangle = \langle |\delta u_n|^p \rangle \quad (119)$$

$$S_p(\bar{r}) = \langle |u(\bar{x} + \Delta\bar{x}) - u(\bar{x})|^p \rangle \quad (120)$$

After discretization of $\Delta\bar{x}$ displacement the above relation can be identified to:

$$Sp(l^n) = \langle |\delta u_n|^p \rangle \quad (121)$$

The field values $u(\bar{x})$ can be related with the energy dissipation values ε_n by the general relation $\varepsilon_n = (\delta u_n)^3 / l^n$ in order to obtain the structure functions as follows:

$$S_p(l^n) = \langle (\varepsilon_n / \varepsilon_0)^p \rangle = \langle \delta_n^{p(a-1)} \rangle = \delta_n^{j(p)} \quad (122)$$

where the averaging processes $\langle \dots \rangle$ is defined by using the probability function $P(a)da$ as $\langle \dots \rangle = \int da(\dots)P(a)$. By this, the scaling exponent $J(p)$ of the structure functions is given by the relation:

$$J(p) = 1 + \tau(\bar{q} = \frac{p}{3}) \quad (123)$$

By following Arimitsu [78] the relation (2.30) leads to the theoretical prediction of $J(p)$ after extremization of Tsallis entropy as follows:

$$J(p) = \frac{a_0 p}{3} - \frac{2Xp^2}{q(1 + \sqrt{C_{p/3}})} - \frac{1}{1-q} [1 - \log_2(1 + \sqrt{C_{p/3}})] \quad (124)$$

The first term $a_0 p/3$ corresponds to the original of known Kolmogorov theory (K41) according to which the dissipation of field energy ε_n is identified with the mean value ε_0 according to the Gaussian self-similar homogeneous turbulence dissipation concept, while $a_0 = 1$ according to the previous analysis for homogeneous turbulence. According to this concept the multifractal spectrum consists of a single point. The next terms after the first in the relation (2.39) correspond to the multifractal structure of intermittence turbulence indicating that the turbulent state is not homogeneous across spatial scales. That is, there is a greater spatial concentration of turbulent activity at smaller than at larger scales. According to Abramenko [36] the intermittent multifractal (inhomogeneous) turbulence is indicated by the general scaling exponent $J(p)$ of the structure functions according to the relation:

$$J(p) = \frac{p}{3} + T^{(u)}(p) + T^{(F)}(p), \quad (125)$$

where the $T^{(u)}(p)$ term is related with the dissipation of kinetic energy and the $T^{(F)}(p)$ term is related to other forms of field's energy dissipation as the magnetic energy at MHD turbulence [36, 83].

The scaling exponent spectrum $J(p)$ can be also used for the estimation of the intermittency exponent μ according to the relation:

$$S(2) \equiv \langle \varepsilon^2 / \varepsilon \rangle \propto \delta_n^\mu = \delta_n^{J(2)} \quad (127)$$

from which we conclude that $\mu = J(2)$. The intermittency turbulence correction to the law $P(f) \propto f^{-5/3}$ of the energy spectrum of Kolmogorov's theory is given by using the intermittency exponent:

$$P(f) \propto f^{-(5/3+\mu)} \quad (128)$$

The previous theoretical description can be used for the theoretical interpretation of the experimentally estimated structure function, as well as for relating physically the results of data analysis with Tsallis statistical theory, as it is described in the next sections.

4. Comparison of theory with the observations

4.1 The Tsallis q -statistics

The traditional scientific point of view is the priority of dynamics over statistics. That is dynamics creates statistics. However for complex system their holistic behaviour does not permit easily such a simplification and division of dynamics and statistics. Tsallis q – statistics and fractal or strange kinetics are two faces of the same complex and holistic (non-reductionist) reality. As Tsallis statistics is an extension of B-G statistics, we can support that the thermic and the dynamical character of a complex system is the manifestation of the same physical process which creates extremized thermic states (extremization of Tsallis entropy), as well as dynamically ordered states. From this point of view the Feynman path integral formulation of physical theory [84] indicates the indivisible thermic and dynamical character of physical reality. After this general investment in the following, we present evidence of Tsallis non-extensive q – statistics for space plasmas. The Tsallis statistics in relation with fractal and chaotic dynamics of space plasmas will be presented in a short coming series of publications.

In next sections we present estimations of Tsallis statistics for various kinds of space plasma's systems. The q_{stat} Tsallis index was estimated by using the observed Probability Distribution Functions (PDF) according to the Tsallis q -exponential distribution:

$$PDF[\Delta Z] \equiv A_q \left[1 + (q-1) \beta_q (\Delta Z)^2 \right]^{-\frac{1}{1-q}}, \quad (129)$$

where the coefficients A_q, β_q denote the normalization constants and $q \equiv q_{stat}$ is the entropic or non-extensivity factor ($q_{stat} \leq 3$) related to the size of the tail

in the distributions. Our statistical analysis is based on the algorithm described in [56]. We construct the $PDF[\Delta Z]$ which is associated to the first difference $\Delta Z = Z_{n+1} - Z_n$ of the experimental sunspot time series, while the ΔZ range is subdivided into little "cells" (data binning process) of width δz , centered at z_i so that one can assess the frequency of Δz -values that fall within each cell/bin. The selection of the cell-size δz is a crucial step of the algorithmic process and its equivalent to solving the binning problem: a proper initialization of the bins/cells can speed up the statistical analysis of the data set and lead to a convergence of the algorithmic process towards the exact solution. The resultant histogram is being properly normalized and the estimated q-value corresponds to the best linear fitting to the graph $\ln_q(p(z_i))$ vs z_i^2 . Our algorithm estimates for each $\delta_q = 0,01$ step the linear adjustment on the graph under scrutiny (in this case the $\ln_q(p(z_i))$ vs z_i^2 graph) by evaluating the associated correlation coefficient (CC), while the best linear fit is considered to be the one maximizing the correlation coefficient. The obtained q_{stat} , corresponding to the best linear adjustment is then being used to compute the following equation:

$$G_q(\beta, z) = \frac{\sqrt{\beta}}{C_q} e_q^{-\beta z^2} \tag{130}$$

where $C_q = \sqrt{\pi} \cdot \Gamma(\frac{3-q}{2(q-1)}) / \sqrt{q-1} \cdot \Gamma(\frac{1}{q-1})$, $1 < q < 3$ for different β -values. Moreover, we select the β -value minimizing the $\sum_i [G_{q_{stat}}(\beta, z_i) - p(z_i)]^2$, as proposed again in [56].

In the following we present the estimation of Tsallis statistics q_{stat} for various cases of space plasma system. Especially, we study the q -statistics for the following space plasma complex systems: I Magnetospheric system, II Solar Wind (magnetic cloud), III Solar activity, IV Cosmic stars, IIV Cosmic Rays.

4.2 Cardiac Dynamics

For the study of the q-statistics we used measurements from the cardiac and especially the heart rate variability timeseries which includes a multivariate data set recorded from a patient in the sleep laboratory of the Beth Israel Hospital in Boston, Massachusetts. The heart rate was determined by measuring the time between the QRS complexes in the electrocardiogram, taking the

inverse, and then converting this to an evenly sampled record by interpolation. They were converted from 250 Hz to 2 Hz data by averaging over a 0.08 second window at the times of the heart rate samples.

Figure 1a presents the experimental time series, while Fig.1b presents the q-Gaussian functions G_q , corresponding to the time series under scrutiny. The q-Gaussian function presents the best fitting of the experimental distribution function $P(z)$ estimated for the value $q_{stat} = 1.26 \pm 0.1$ for the stationary heart variability time series. The q-value was estimated by the linear correlation fitting between $\ln_q P(z_i)$ and $(z_i)^2$, shown in fig. 1c, where $P(z)$ corresponds to the experimental distribution functions, according to the description in section 4.1. The fact that the heart's variability observations obey to non-extensive Tsallis with a q -values higher than the Gaussian case ($q = 1$) permit to conclude for the heart's variability dynamics case the existence of q-statistics .

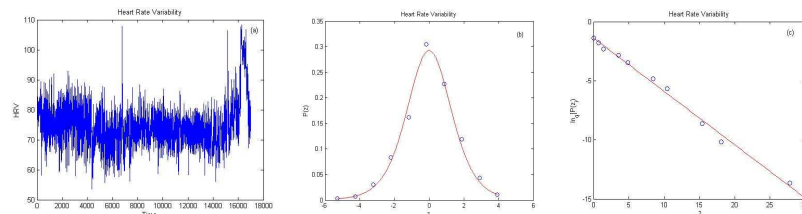


Figure 1: (a) Time series of heart rate variability (b) PDF $P(z_i)$ vs. z_i q Gaussian function that fits $P(z_i)$ for the heart rate variability (c) Linear Correlation between $\ln_q P(z_i)$ and $(z_i)^2$ where $q = 1.26 \pm 0.10$ for the heart rate variability.

4.3 Brain Epilepsy Dynamics

In this section we present the q-statistics obtained from real EEG timeseries from epileptic patients during seizure attack. Each EEG timeseries consisting of 3.750 points. The width of the timeseries is ranging from -1,000 Volt to 1,000 Volt.

In Figure 2a the experimental time series during the epilepsy is presented. The q-value was found to be $q_{stat} = 1.64 \pm 0.14$. The results of the q-statistics analysis are shown in Figure 2b and Figure 2c.

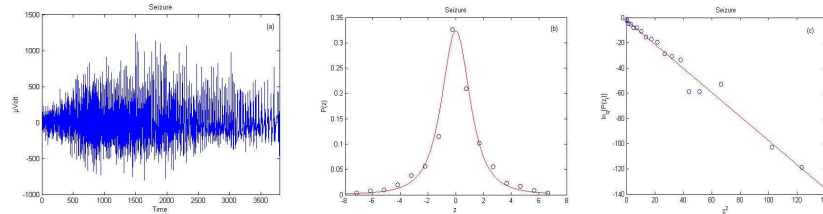


Figure 2: (a) Time series of seizure state (b) PDF $P(z_i)$ vs. z_i q Gaussian function that fits $P(z_i)$ for the seizure state (c) Linear Correlation between $\ln_q P(z_i)$ and $(z_i)^2$ where $q = 1.63 \pm 0.14$ for the seizure state.

4.4 Earthquakes Dynamics

In this sub-section we present the q -statistics of the experimental data from earthquakes in the region of whole Greece with magnitude greater from 4 and time period 1964-2004. The data set was found from the National Observatory of Athens (NOA).

In Figure 3a the time series of Interevent Times is presented, while the corresponding q -value is shown in Figure 3b and was found to be $q_{stat} = 2.28 \pm 0.12$. In Figure 3d we present the experimental time series of Magnitude data. The q -statistics for this case are presented in Figure 3e. The corresponding q -value was found to be $q_{stat} = 1.77 \pm 0.09$. The results reveal clearly non-Gaussian statistics for the earthquake Interevent Times and Magnitude data. The results showed the existence of q -statistics and the non-Gaussianity of the data sets.

4.5 Atmospheric Dynamics

In this sub-section we study the q -statistics for the air temperature and rain fall experimental data sets from the weather station 20046 Polar GMO in E.T. Krenkelja for the period 1/1/1960 – 31/12/1960. In Figure 4(a,d) the experimental time series from temperature and rainfall correspondingly are presented and in the Figure 4(b,c,e,f) the results of the q -statistics analysis are shown. The estimated q -values were found to be for the temperature data set and for the rainfall data set. In both cases we observed clearly non Gaussian statistics.

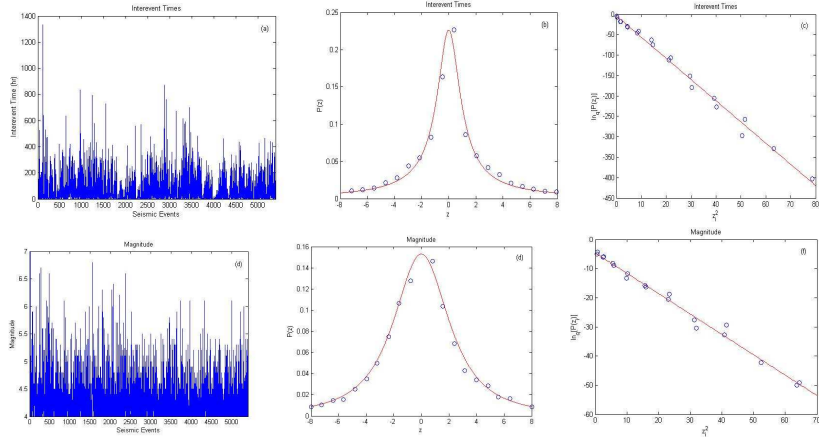


Figure 3: (a) Time series of Inter-event Times (b) PDF $P(z_i)$ vs. z_i q Gaussian function that fits $P(z_i)$ for the Inter-event Times (c) Linear Correlation between $\ln_q P(z_i)$ and $(z_i)^2$ where $q = 2.28 \pm 0.12$ for the Inter-event Times (d) Time series of Magnitude (e) PDF $P(z_i)$ vs. z_i q Gaussian function that fits $P(z_i)$ for the Magnitude (f) Linear Correlation between $\ln_q P(z_i)$ and $(z_i)^2$ where $q = 1.77 \pm 0.09$ for the Magnitude.

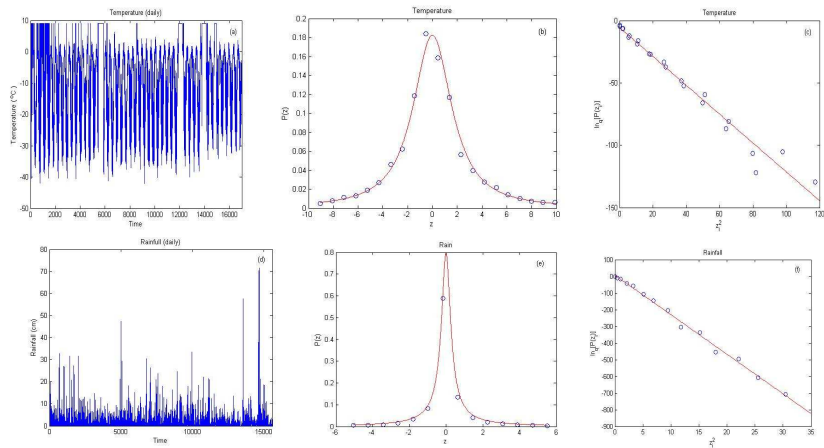


Figure 4: (a) Time series of Temperature (b) PDF $P(z_i)$ vs. z_i q Gaussian function that fits $P(z_i)$ for the Temperature (c) Linear Correlation between $\ln_q P(z_i)$ and $(z_i)^2$ where $q = 1.89 \pm 0.08$ for the Temperature (d) Time series of Rainfall (e) PDF $P(z_i)$ vs. z_i q Gaussian function that fits $P(z_i)$ for the Rainfall (f) Linear Correlation between $\ln_q P(z_i)$ and $(z_i)^2$ where $q = 2.21 \pm 0.06$ for the Rainfall.

4.6 Magnetospheric Magneto Hydro Dynamics (MHD) Dynamics

The estimation of V_x, B_z Tsallis statistics during the substorm period is presented in fig.5(a-f). Fig. 2(a,d) shows the experimental time series corresponding to spacecraft observations of bulk plasma flows V_x and magnetic field B_z component. Fig. 2(b,e) presents the estimated q-values for the V_x plasma velocity time series and for the magnetic field B_z component time series. The q-values of the signals under scrutiny were found to be $q_{stat} = 1.98 \pm 0.06$ for the V_x plasma velocity time series and $q_{stat} = 2.05 \pm 0.04$ for the magnetic field B_z component. The fact that the magnetic field and plasma flow observations obey to non-extensive Tsallis with q – values much higher than the Gaussian case ($q = 1$) permit to conclude for magnetospheric plasma the existence of non-equilibrium MHD anomalous diffusion process.

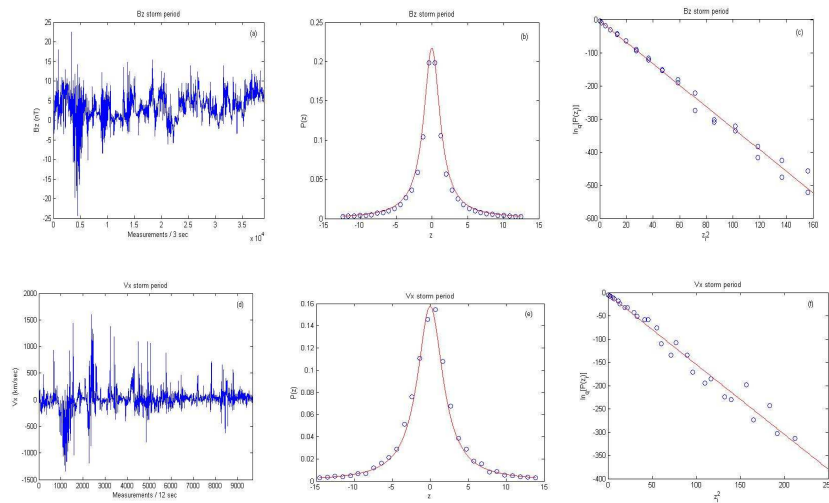


Figure 5: (a) Time series of Bz storm period (b) PDF $P(z_i)$ vs. z_i q Gaussian function that fits $P(z_i)$ for the Bz storm period (c) Linear Correlation between $\ln_q P(z_i)$ and $(z_i)^2$ where $q = 2.05 \pm 0.04$ for the Bz storm period (d) Time series of Vx storm period (e) PDF $P(z_i)$ vs. z_i q Gaussian function that fits $P(z_i)$ for the Vx storm period (f) Linear Correlation between $\ln_q P(z_i)$ and $(z_i)^2$ where $q = 1.98 \pm 0.06$ for the Vx storm period.

4.7 Magnetospheric Fractal Accelerator of Charged Particles

Already Tsallis theory has been used for the study of magnetospheric energetic particles non-Gaussian by Voros [61] and Leubner [62]. In the following we study the q -statistics of magnetospheric energetic particle during a strong sub-storm period. We used the data set from the GEOTAIL/EPIC experiment during the period from 12:00 UT to 21:00 UT of 8/2/1997 and from 12:00 UT of 9/2/1997 to 12:00 UT of 10/2/1997. The Tsallis statistics estimated for the magnetospheric electric field and the magnetospheric particles (e^- , p^+) during the storm period is shown in Fig. 6(a-i). Fig. 6(a,d,g) present the spacecraft observations of the magnetospheric electric field E_y component and the magnetospheric electrons (e^-) and protons (p^+). The corresponding Tsallis q -statistics was found to correspond to the q -values: $q_{stat} = 2.49 \pm 0.07$ for the E_y electric field component, $q_{stat} = 2.15 \pm 0.07$ for the energetic electrons and $q_{stat} = 2.49 \pm 0.05$ for the energetic protons. These values reveal clearly non-Gaussian dynamics for the mechanism of electric field development and electrons-protons acceleration during the magnetospheric storm period.

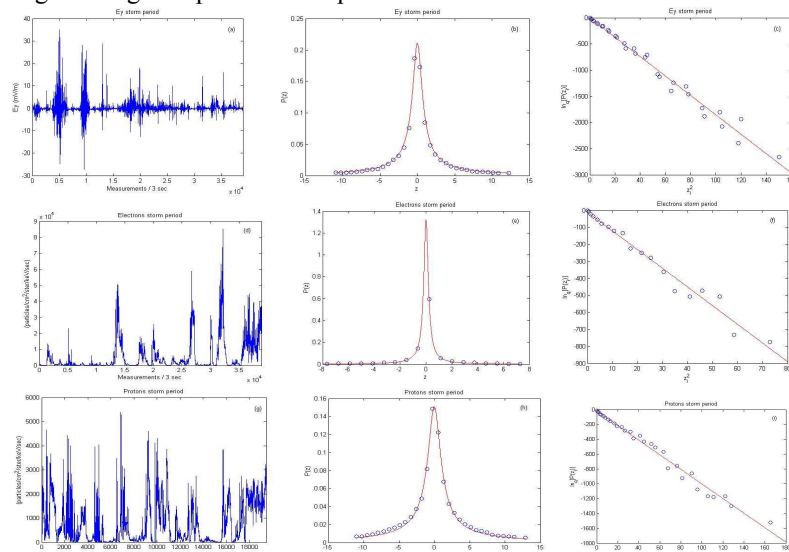


Figure 6: (a) Time series of E_y storm period (b) PDF $P(z_i)$ vs. z_i q Gaussian function that fits $P(z_i)$ for the E_y storm period (c) Linear Correlation between $\ln_q P(z_i)$ and $(z_i)^2$ where $q = 2.49 \pm 0.07$ for the E_y storm period (d) Time series of electrons storm period (e) PDF $P(z_i)$ vs. z_i q Gaussian function that fits $P(z_i)$ for the electrons storm period (f) Linear Correlation between $\ln_q P(z_i)$ and $(z_i)^2$ where $q = 2.15 \pm 0.07$ for the electrons storm period time series (g) Time series of protons storm period (h) PDF $P(z_i)$ vs. z_i q Gaussian function that fits $P(z_i)$

for the protons storm period **(i)** Linear Correlation between $\ln_q P(z_i)$ and $(z_i)^2$ where $q = 2.49 \pm 0.05$ for the protons storm period.

4.8 Solar Wind Magnetic Cloud

From the spacecraft ACE, magnetic field experiment (MAG) we take raw data and focus on the B_z magnetic field component with a sampling rate 3 sec. The data correspond to sub-storm period with time zone from 07:27 UT, 20/11/2001 until 03:00 UT, 21/11/2003.

Magnetic clouds are a possible manifestation of a Coronal Mass Ejection (CME) and they represent on third of ejectra observed by satellites. Magnetic cloud behave like a magnetosphere moving through the solar wind. Carbone et al. [58], de Wit [63] estimated non-Gaussian turbulence profile of solar wind. Bourlaga and Vinas [55] estimated the q-statistics of solar wind at the q-value $q_{stat} = 1.75 \pm 0.06$. Fig. 7 presents the q-statistics estimated in the magnetic cloud solar plasma for the z-component B_z of the magnetic field. The B_z time series is shown in Fig. 7a. The q-statistics for B_z component is shown at Fig. 7(b,c), while the q-value was found to be $q_{stat} = 2.02 \pm 0.04$. This value is higher than the value $q_{stat} = 1.75$ estimated from Bourlaga and Vinas [55] at 40 AU.

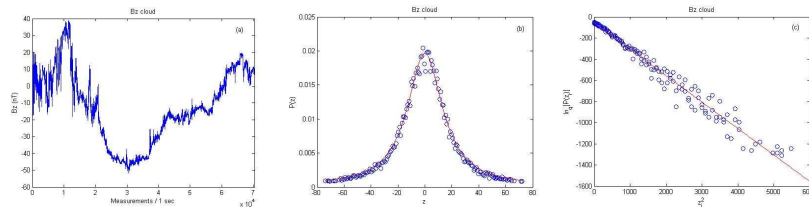


Figure 7: (a) Time series of B_z cloud **(b)** PDF $P(z_i)$ vs. z_i q Gaussian function that fits $P(z_i)$ for the B_z cloud **(c)** Linear Correlation between $\ln_q P(z_i)$ and $(z_i)^2$ where $q = 2.02 \pm 0.04$ for the B_z cloud.

4.9 Solar Activity: Sun Spot-Flares Dynamics

In this sub-section we present the q-statistics of the sunspot and solar flares complex systems by using data of Wolf number and daily Flare Index. Especially, we use the Wolf number, known as the international sunspot number measures the number of sunspots and group of sunspots on the surface of the sun computed by the formula: $(10)R=k*(10g+s)$ where: s is the number of individual spots, g is the number of sunspot groups and k is a factor that varies with location known as the observatory factor. We analyse a period of 184 years. Moreover we analyse the daily Flare Index of the solar activity that was determined using the final grouped solar flares obtained by NGDC (National Geophysical Data Center). It is calculated for each flare using the

formula: $Q = (i * t)$, where "i" is the importance coefficient of the flare and "t" is the duration of the flare in minutes. To obtain final daily values, the daily sums of the index for the total surface are divided by the total time of observation of that day. The data covers time period from 1/1/1996 to 31/12/2007.

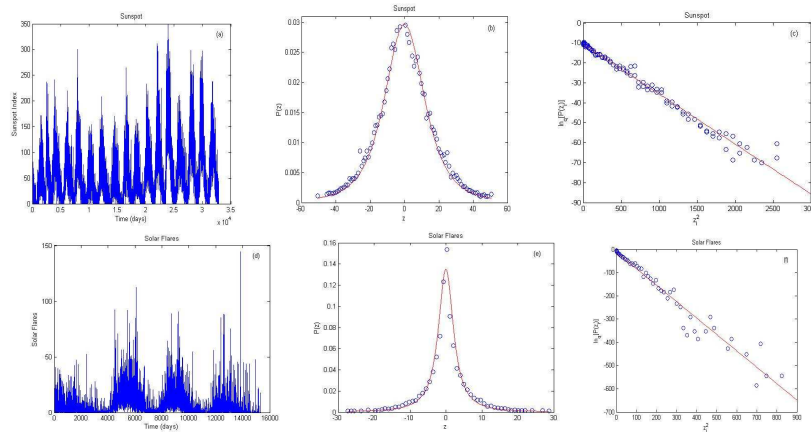


Figure 8: (a) Time series of Sunspot Index concerning the period of 184 years (b) PDF $P(z_i)$ vs. z_i q Gaussian function that fits $P(z_i)$ for the Sunspot Index (c) Linear Correlation between $\ln_q P(z_i)$ and $(z_i)^2$ where $q = 1.53 \pm 0.04$ for the Sunspot Index (d) Time series of Solar Flares concerning the period of 184 years (e) PDF $P(z_i)$ vs. z_i q Gaussian function that fits $P(z_i)$ for the Solar Flares (f) Linear Correlation between $\ln_q P(z_i)$ and $(z_i)^2$ where $q = 1.90 \pm 0.05$ for the Solar Flares.

Although solar flares dynamics is coupled to the sunspot dynamics. Karakatsanis and Pavlos [64] and Karakatsanis et al. [64] have shown that the dynamics of solar flares can be discriminated from the sunspot dynamics. Fig. 8 presents the estimation of q -statistics of sunspot index shown in fig. 8(b,c) and the q -statistics of solar flares signal shown in fig. 8(e,g). The q -values for the sunspot index and the solar flares time series were found to be $q_{stat} = 1.53 \pm 0.04$ and $q_{stat} = 1.90 \pm 0.05$ correspondingly. We clearly observe non-Gaussian statistics for both cases but the non-Gaussianity of solar flares was found much stronger than the sunspot index.

4.10 Solar Flares Fractal Accelerator

At solar flare regions the dissipated magnetic energy creates strong electric fields according to the theoretical concepts. The bursty character of the electric field creates burst of solar energetic particles through a mechanism of solar

flare fractal acceleration. According to theoretical concept presented in previous section the fractal acceleration of energetic particles can be concluded by the Tsallis q -extension of statistics for non-equilibrium complex states. In the following we present significant verification of this theoretical prediction of Tsallis theory by study the q -statistics of energetic particle acceleration. Finally we analyze energetic particles from spacecraft ACE – experiment EPAM and time zone 1997 day 226 to 2006 day 178 and protons (0.5 – 4) MeV with period 20/6/1986 – 31/5/2006, spacecraft GOES, hourly averaged data. Figure 9 presents the estimation of the solar protons - electrons q -statistics. The q -values for solar energetic protons and electrons time series were found to be $q_{stat} = 2.31 \pm 0.13$ and $q_{stat} = 2.13 \pm 0.06$ correspondingly. Also in this case we clearly observe non-Gaussian statistics for both cases.

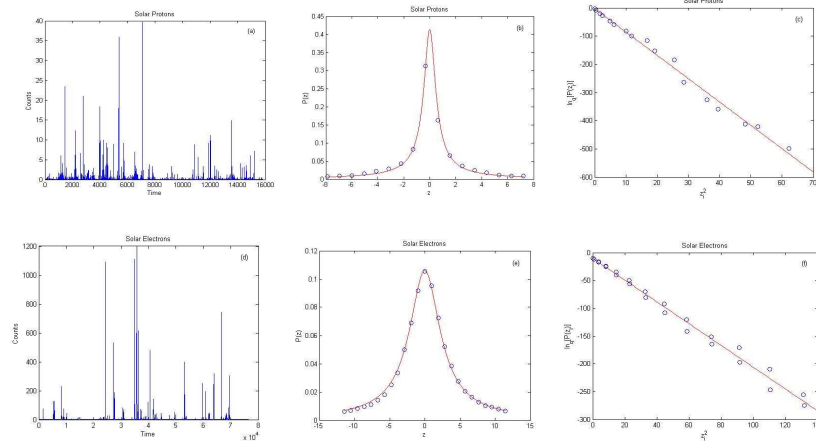


Figure 9: (a) Time series of Solar proton (b) PDF $P(z_i)$ vs. z_i q Gaussian function that fits $P(z_i)$ for the Solar proton data (c) Linear Correlation between $\ln_q P(z_i)$ and $(z_i)^2$ where $q = 2.31 \pm 0.13$ for the Solar proton (d) Time series of Solar electrons (e) PDF $P(z_i)$ vs. z_i q Gaussian function that fits $P(z_i)$ for the Solar electrons (f) Linear Correlation between $\ln_q P(z_i)$ and $(z_i)^2$ where $q = 2.13 \pm 0.06$ for the Solar electrons.

4.11 Cosmic Stars

In the following we study the q -statistics for cosmic star brightness. For this we used a set of measurements of the light curve (time variation of the intensity) of the variable white dwarf star PG1159-035 during March 1989. It was recorded by the Whole Earth Telescope (a coordinated group of telescopes distributed around the earth that permits the continuous observation of an astronomical object) and submitted by James Dixson and Don Winget of the Department of Astronomy and the McDonald Observatory of the University of Texas at Austin. The telescope is described in an article in The Astrophysical Journal (361), p. 309-317 (1990), and the measurements on PG1159-035 will be described in an article scheduled for the September 1 issue of the Astrophysical

Journal. The observations were made of PG1159-035 and a non-variable comparison star. A polynomial was fit to the light curve of the comparison star, and then this polynomial was used to normalize the PG1159-035 signal to remove changes due to varying extinction (light absorption) and differing telescope properties.

Figure 10 shows the estimation of q-statistics for the cosmic stars PG-1159-035. The q-values for the star PG-1159-035 time series was found to be $q_{stat} = 1.64 \pm 0.03$. We clearly observe non-Gaussian statistics.

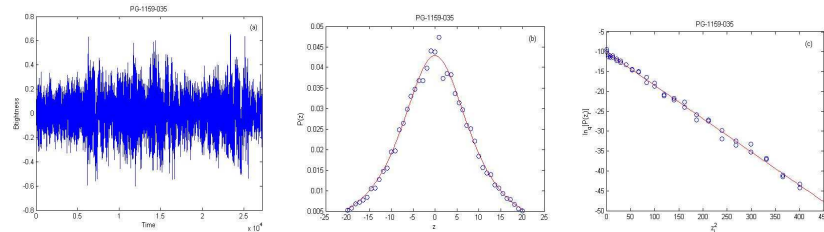


Figure 10: (a) Time series of cosmic star PG-1159-035 (b) PDF $P(z_i)$ vs. z_i q Gaussian function that fits $P(z_i)$ for the cosmic star PG-1159-035 (c) Linear Correlation between $\ln_q P(z_i)$ and $(z_i)^2$ where $q = 1.64 \pm 0.03$ for the cosmic star PG-1159-035.

4.12 Cosmic Rays

In this sub-section we study the q-statistics for the cosmic ray (carbon) data set. For this we used the data from the Cosmic Ray Isotope Spectrometer (CRIS) on the Advanced Composition Explorer (ACE) spacecraft and especially the carbon element (56-74 Mev) in hourly time period and time zone duration from 2000 – 2011. The cosmic rays data set is presented in Fig.11a, while the q-statistics is presented in Fig.11[b,c]. The estimated q_{stat} value was found to be $q_{stat} = 1.44 \pm 0.05$. This result reveals clearly non-Gaussian statistics for the cosmic rays data.

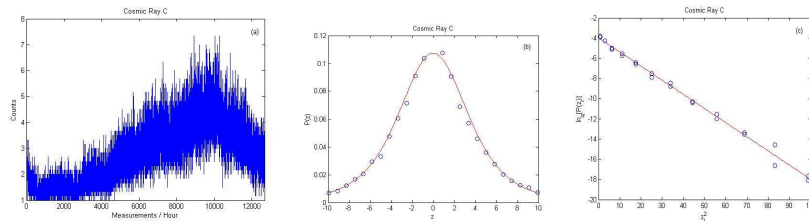


Figure 11: (a) Time series of cosmic ray Carbon (b) PDF $P(z_i)$ vs. z_i q Gaussian function that fits $P(z_i)$ for the cosmic ray Carbon (c) Linear Correlation between $\ln_q P(z_i)$ and $(z_i)^2$ where $q = 1.44 \pm 0.05$ for the cosmic ray Carbon.

System	q_stat
Cardiac (hrv)	1.26 ± 0.10
Brain (seizure)	1.63 ± 0.14
Seismic (Interevent)	2.28 ± 0.12
Seismic (Magnitude)	1.77 ± 0.09
Atmosphere (Temperature)	1.89 ± 0.08
Atmosphere (Rainfall)	2.21 ± 0.06
Magnetosphere (Bz storm)	2.05 ± 0.04
Magnetosphere (Vx storm)	1.98 ± 0.06
Magnetosphere (Ey storm)	2.49 ± 0.07
Magnetosphere (Electrons storm)	2.15 ± 0.07
Magnetosphere (Protons storm)	2.49 ± 0.05
Solar Wind (Bz cloud)	2.02 ± 0.04
Solar (Sunspot Index)	1.53 ± 0.04
Solar (Flares Index)	1.8700
Solar (Protons)	2.31 ± 0.13
Solar (Electrons)	2.13 ± 0.06
Cosmic Stars (Brighthness)	1.64 ± 0.03
Cosmic Ray (C)	1.44 ± 0.05

TABLE 1: This table includes the estimated qstat indeces for the brain and heart activity, the Magnetospheric dynamics (Bz, Vx, Ey, electron, protons time series), solar wind magnetic cloud, sunspot-solar flare time series, cosmic stars and cosmic rays

5. Summary and Discussion

In this study we presented novel theoretical concepts (sections 2-3) and novel experimental results (section 4) concerning the non-equilibrium distributed dynamics of various kinds of complex systems as : brain and heart activity, seismic and atmospheric dynamics as well as space plasmas dynamics corresponding to planetic magnetospheres, solar wind, solar corona, solar convection zone, cosmic stars and cosmic rays. In all of these cases the statistics was found to be non-Gaussian as the q-statistics index was estimated to be larger than the value $q=1$ which corresponds to Gaussian dynamics. The values of qstat index for the systems which were studied are presented in table 1. This experimental result constitutes strong evidence for the universality of non-equilibrium complex or strange dynamics as it was presented in section 2

of this study. As for the theory in the theoretical description of this study we have shown the theoretical coupling of Tsallis non-extensive statistical theory and the non-equilibrium fractal dynamics. That is has been shown also the internal correlation of the Tsallis q -extension of Boltzmann-Gibbs statistics with modern fractal generalization of dynamics. Our theoretical descriptions showed the possibility of the experimental testing of Tsallis statistics and fractal dynamics through the Tsallis q -triplet as well as the structure functions exponent spectrum. Moreover at this study we have tested the theoretical concepts only through the q -statistics index of Tsallis non extensive theory, the tests of the entire q -triplet and the structure functions exponent spectrum are going to be presented in a short coming paper [37].

Finally the theoretical concepts and the experimental results of this study clearly indicate the faithful character of the universality of Tsallis q -statistics and fractal dynamics in a plenty of different physical systems. In this way we can indicate faithfully that the Tsallis q -entropy theory as well as the fractal dynamics constitutes the new basis for a novel unification of the complexity physical theory.

References

1. Prigozine I., (1977), Time, structure and fluctuations, Nobel Lecture.; Prigozine I., (1996), *El fin de las certitumbres*, Editions Odile Jakob
2. Nicolis, G. & Prigogine, I. [1971], Fluctuations in nonequilibrium systems" Proc. Nat. Acad. Sci. 68x, p. 2102.; Nicolis, G. & Prigogine, I. [1977], Self-organization in nonequilibrium systems: From dissipative structures to order through uctuations", Willey, New York.; Nicolis, G. [1979] "Irreversible thermodynamics", Rep. Prog. Phys., 42, p. 225.; Nicolis, G. [1986] "Dissipative Systems", Rep. Prog. Phys., 49, p. 873.; Nicolis, G. [1989] "Physics of Far-From-Equilibrium Systems and Selforganisation", in Davies, Cambridge University Press.; Nicolis, G. & Prigogine, I. [1989] "Exploring Complexity: An Introduction", eds. Freeman, W.H., San Francisco.
3. Davies, P., The cosmic blueprint, Unwin Paperbacks, 1987.
4. El Naschie, M.S. [1998] "Superstrings, Knots, and Noncommutative Geometry in E(in_nity) Space", Int. Journal of Theoretical Physics, 37, p. 2935.; El Naschie, M.S. [2004] "A review of E in_nity theory and the mass spectrum of high energy particle physics", Chaos, Solitons & Fractals, 19, p. 209-236.; El Naschie, M.S. [2005] "Einstein's dream and fractal geometry", Chaos, Solitons & Fractals, 24, p. 1.; El Naschie, M.S. [2006] "Elementary prerequisites for E-in_nity (Recommended background readings in nonlinear dynamics, geometry and topology)", Chaos, Solitons & Fractals, 30, p. 579.
5. Iovane, G., Cantorian spacetime and Hilbert space: Part I – Foundations, Chaos, Solitons and Fractals, 28, 857-878, 2006.; Iovane, G., Cantorian spacetime and Hilbert space: Part II – Relevant consequences, Chaos, Solitons and Fractals, 29, 1-22, 2006.
6. Nottale, L. [1993] "Fractal Space-Time and Micro-physics", Towards a Theory of Scale Relativity, eds. World Scientific.; Nottale, L. [1994] "Scale Relativity, Fractal Space-time and Quantum Mechanics", Chaos, Solitons & Fractals, 4, p. 361.;

- Nottale, L. [1996] "Scale Relativity and Fractal Space-Time: Applications to Quantum Physics, Cosmology and Chaotic Systems", *Chaos, Solitons & Fractals*, 7, p. 877.; Nottale L., *The Theory of Scale Relativity: Non-Differentiable Geometry and Fractal Space-Time*, Aip Conference Proceedings 2004, 718(20), p.68-95.; Nottale L., (2006), *Fractal space – time, non – differentiable and scale relativity*, Invited contribution for the Jubilee of Benoit mandelbrot.
7. Castro, C. [2005] ", On non-extensive statistics, chaos and fractal strings", *Physica A* 347, p. 184.
 8. Bohr, N., *Dialectica* 1, 312, 1948.
 9. Khrenninov, A., *Classical and Quantum Mechanics of Information Spaces with Applications to Cognitive, Physiological, Social, and Anomalous Phenomena*, *Foundations of Physics*, 29 (7), 1999.
 10. Kroger, H., Why are probabilistic laws governing quantum mechanics and neurobiology?, *Chaos, Solitons and Fractals*, 25, 815-834, 2005.
 11. Pezzaglia, W.W., *Dimensionally Democratic Calculus and Principles of Polydimensional Physics*, arxiv: gr-qc/9912025v1, 1999.
 12. Tarasov, V.E., *Fractional Liouville and BBGKI Equations*, *Journal of Physics: Conferences Series* 7, 17-33, 2005.; Tarasov, V.E., *Electromagnetic Fields on fractals*, *Modern Physics Letters, A* 21, 1587-1600, 2006.; Tarasov, V.E., *Fractional Variations for dynamical systems: Hamilton and Lagrange approaches*, *J. of Phys. A: Math. Gen.*, 39, 8409-8425, 2006.; Tarasov, V.E., *Fractional vector calculus and fractional Maxwell's equations*, *Annals of Physics*, 323, 2756-2778, 2008.
 13. El-Nabulsi, A.R., *A Fractional Approach to Nonconservative Lagrangian Dynamical Systems*, *FIZIKA A*, 14, 289-298, 2005.; El-Nabulsi, A.R., *Necessary optimality conditions for fractional action-like integrals of variational calculus with Riemann-Liouville derivatives of order (α, β)* , *Math. Meth. Appl. Sci.*, 30, 1931-1939, 2007.; El-Nabulsi, A.R., *Fractional dynamics, fractional weak bosons masses and physics beyond the standard model*, *Chaos, Solitons and Fractals*, 41, 2262-2270, 2009.; El-Nabulsi, A.R., *Fractional action-like variational problems in holonomic, non-holonomic and semi-holonomic constrained and dissipative dynamical systems*, *Chaos, Solitons and Fractals*, 42, 52-61, 2009.
 14. Cresson, J., *Non-differentiable variational principles*, *J. Math. Anal. Appl.*, 307, 48-64, 2005.; Cresson, J. and Greff, I., *Non-differentiable embedding of Lagrangian systems and partial differential equations*, *J. Math. Anal. Appl.*, 384, 626-646, 2011.
 15. Goldfain, E., *Fractional dynamics, Cantorian space-time and the gauge hierarchy problem*, *Chaos, Solitons and Fractals*, 22, 513-520, 2004.; Goldfain, E., *Complex Dynamics and the High-energy Regime of Quantum Field Theory*, *Int. J. of Nonlinear Sciences and Numerical Simulation*, 6(3), 223-234, 2005.; Goldfain, E., *Chaotic Dynamics of the Renormalization Group Flow and Standard Model Parameters*, *Int. J. of Nonlinear Science*, 3, 170-180, 2007.; Goldfain, E., *Fractional dynamics and the TeV regime of field theory*, *Communications in Nonlinear Science and Numerical Simulation*, 13, 666-676, 2008.
 16. Pavlos, G.P., Sarris, E.T., Paschalidis, N., *The growth rate and location of the acceleration of energetic particles inside the plasma sheet*, *Planetary and Space Science*, Vol. 37, issue 5, pp. 503-516, May 1989.; Pavlos, G.P., Sarris, E.T., *Encounter with a source of energetic particles inside the plasma sheet*, *Annales Geophysicae*, Vol. 7, pp. 531-539, October 1989.; Pavlos, G.P., Kyriakou, G.A., Rigas, A.G., Liatsis, P., Trochoutsos, P.C., Tsonis, A.A., *Evidence for strange*

- attractor structures in space plasmas, *Annales Geophysicae*, Vol. 10, No. 5, pp. 309-322, May 1992.; Pavlos, G.P., Dialettis, D., Kyriakou, G.A., Sarris, E.T., A preliminary low-dimensional Chaotic Analysis of the solar Cycle, *Annales Geophysicae*, Vol. 10, No. 10, pp. 759-762, October 1992.; Pavlos, G.P., Rigas, A.G., Dialettis, D., Sarris, E.T., Karakatsanis, L.P., Tsonis T.T., Evidence for chaotic dynamics in the outer solar plasma and the earth magnetosphere, *Chaotic Dynamics: Theory and Practice*, NATO ASI Series B: Physics, Vol. 298, pp. 327-339, November 1992.; Pavlos, G.P., Karakatsanis, L.P., Latousakis, I., Dialettis, D., Papaioannou, G., Chaotic analysis of a time series composed by seismic events recorded in Japan, *International Journal of Bifurcation and Chaos*, Vol. 4, issue 1, pp. 87-98, February 1994.; Pavlos, G.P., Diamantidis, D., Adamopoulos, A., Rigas, A.G., Daglis, I.A., Sarris, E.T., Chaos and magnetospheric dynamics, *Nonlinear Processes in Geophysics*, Vol. 1, No. 2/3, pp. 124-135, 1994.; Pavlos, G.P., Athanasiou, M., Kugiumtzis, D., Hatzigeorgiu, N., Rigas, A.G., Sarris, E.T., Nonlinear analysis of Magnetospheric data, Part I. Geometric characteristics of the AE index time series and comparison with nonlinear surrogate data, *Nonlinear Processes in Geophysics*, Vol. 6, No. 1, pp. 51-65, 1999a.; Pavlos, G.P., Kugiumtzis, D., Athanasiou, M., Hatzigeorgiu, N., Diamantidis, D., Sarris, E.T., Nonlinear analysis of Magnetospheric data, Part II. Dynamical characteristics of the AE index time series and comparison with nonlinear surrogate data, *Nonlinear Processes in Geophysics*, Vol. 6, No. 2, pp. 79-98, 1999b.; Pavlos, G.P., Athanasiou, M., Diamantidis, D., Rigas, A.G., Sarris, E.T., Comments and new results about the magnetospheric chaos hypothesis, *Nonlinear Processes in Geophysics*, Vol. 6, No. 2, pp. 99-127, 1999c.
17. Iliopoulos, A., Pavlos, G. & Athanasiu, M. [2008], Spatiotemporal Chaos into the Hellenic Seismogenesis: Evidence for a Global Strange Attractor, *Nonlin. Phenom. Complex Sys.* 11(2), p. 274.; Iliopoulos, A. & Pavlos, G. [2010], Global Low Dimensional Seismic Chaos in the Hellenic Region," *Intern. J. Bifurc. Chaos* 20(7), p. 2071.
 18. Sparrow, C., *The Lorenz Equations, Bifurcations, Chaos and Strange Attractors*, Springer, 1982.
 19. Quantitative Universality for a Class of Nonlinear Transformations, *Journal of Statistical Physics*, 19, 25-52, 1978.
 20. Libchaber, A., *Experimental Study of Hydrodynamic Instabilities. Rayleigh-Bernard Experiment: Helium in a Small Box*, *Nonlinear Phenomena at Phase Transitions and Instabilities*, eds. Riste, T., 259, Plenum, 1982.
 21. Nelson, E. [1966], Derivation of the Schrodinger equation from Newtonian mechanics, *Phys. Rev.*, 150, p. 1079.; Nelson, E. [1985], *Quantum Fluctuations*, Princeton University Press, New York.
 22. Hooft, G.T. [1999] "Quantum gravity as a dissipative deterministic system", *Class. Quantum Grav.*, 16, p. 3263-3279.; Hooft, G.T. [2001a] "Determinism and Dissipation in Quantum Gravity", *Basics and highlights in fundamental physics: proceedings of the International School of Subnuclear Physics*, 37, p. 397.; Hooft, G.T. [2001b] "How Does God Play Dice?(Pre) Determinism at the Planck Scale", *An Essay in Honor of John S. Bell*, arXiv:hep-th/0104219.
 23. Parisi G. And Ramanurti S., *Statistical Field Theory*, *Physics Today*, vol. 41, issue 12, p. 110, 1988.

24. Beck, C. [1991] "Higher correlation functions of chaotic dynamical systems-a graph theoretical approach", *Nonlinearity*, 4, p. 1131.; Beck C. and Schlogl F. (1993), *Thermodynamics of chaotic systems an introduction*, Cambridge University Press.; Beck C., (1994), *From the Perron-Frobenius equation to the Fokker-Planck equation*, *Journal of Statistical Physics*, 79, 5-6, 875-894; Beck, C. [1995] "Chaotic quantization of field theories", *Nonlinearity*, 8, p. 423.; Beck, C. [2001] "Dynamical Foundations of Nonextensive Statistical Mechanics", *Phys. Rev. Lett.*, 87, p. 1806011.; Beck, C. [2002] "Nonextensive methods in turbulence and particle physics", *Physica A*, 305, p. 209.
25. Jensen, R.V., *Functional Integral Approach to Classical Statistical Dynamics*, *Journal of Statistical Physics*, 25(2), 183, 1981.
26. Ord, G.N. [1983], *Fractal space-time: a geometric analogue of relativistic quantum mechanics*, *J. Phys. A: Math. Gen.*, 16, p. 1869.
27. Nigmatullin RR, (1991), *Fractional integral and its physical interpretation*, *Theoretical and Mathematical Physics*, 90, 3, 242-251.
28. Aristotle, *The Physics*, eds. Wicksteed, P.H. and Cornford, F.M., books I-IV, Loeb Classical Library, 1957.
29. Tsallis C., (1988), *Possible generalization of Boltzmann-Gibbs statistics*, *Journal of Statistical Physics*, 52,1-2, 479-487.; Tsallis C., (2001), *Nonextensive statistical mechanics and thermodynamics: Historical Background and present status*, Springer, S.Abe and Y. Okamoto (Eds.):LNP 560, 3-98.; Tsallis C. (2004), *Nonextensive statistical mechanics: construction and physical interpretation*, *Nonextensive entropy – interdisciplinary applications* Ed. Murray GM and Tsallis C., Oxford Univ. Press, 1-53; Tsallis C. (2009), *Introduction to Non-extensive Statistical Mechanics*, Springer.
30. Zelenyi, L. M. & Milovanov, A. V., *Fractal Properties of Sunspots*, *Soviet Astronomy Letters*, 17, p. 425, 1991.; b) Zelenyi, L. M. & Milovanov, A. V., *Fractal topology and strange kinetics: from percolation theory to problems in cosmic electrodynamics*, *Physics-Uspekhi*, 47(8), 749-788, 2004.; Zelenyi, L.M., Malova, H.V., Artemyev, A.V., Popov, V.Yu. and Petrukovich, A.A., *Thin Current Sheets in Collisionless Plasma: Equilibrium structure, Plasma Instabilities, and Particle Acceleration*, *Plasma Physics Reports*, 37(2), 118-160, 2011.
31. Chang, T., Vvedensky, D.D. and Nicoll, J.F., *Differential Renormalization-Group Generators for Static and Dynamic Critical Phenomena*, *Physics Reports*, 217(6), 279-360, 1992. Chang, T. [1992] "Low-Dimensional Behavior and Symmetry Breaking of Stochastic Systems near Criticality Can these Effects be observed in Space and in the Laboratory", *IEEE*, 20(6), p. 691-694.; Chang, T., *Self-Organized Criticality, multi-fractal spectra, sporadic localized reconnections and intermittent turbulence in the magnetotail*, *Physics of Plasmas*, 6, (1999), 4137.; Chang et al, (2004), *Complexity induced anisotropic bimodal intermittent turbulence in space plasmas*, *Phys. Plasmas* 11, 1287.; Chang, T., Tam, S.W.Y., Wu, C-C, & Consolini, G [2003] "Complexity, Forced and/or Self-Organized Criticality, and Topological Phase Transitions in Space Plasmas", *Space Sci. Rev.*, 107, p. 425-445.; Chang, T., Tam, S.W.Y. and Wu, C.-C., *Complexity induced anisotropic bimodal intermittent turbulence in space plasmas*, *Physics of Plasmas*, 11(4), 1287, 2004.; Chang, T., Tam, S.W.Y. and Wu, C.-C., *Complexity and intermittent turbulence in space plasmas*, (eds.) Sharma, A.S. and Kaw, P.K., *Nonequilibrium Phenomena in Plasmas*, 23-50, 2005.

32. Milovanov, A.V. and Zelenyi, L.M., Functional background of the Tsallis entropy: “coarse-grained” systems and “kappa” distribution functions, *Nonlinear Processes in Geophysics*, 7, 211-221, 2000.; Milovanov, A.V. and Rasmusse, J.J., Fractional generalization of the Ginzburg-Landau equation: an unconventional approach to critical phenomena in complex media, *Physics Letters A377*, 75-80, 2005.; Milovanov, A.V., Dynamic Polarization random walk model and fishbone-like instability for self-organized critical systems, *New Journal of Physics*, 13, 043034, 2011.
33. Ruzmaikin A.A. (1985), *Solar Phys.* 100, 125-140.; Ruzmaikin AA et al, (1996), *Spectral Properties of Solar Convection and Diffusion*, *ApJ*, 471, 1022.
34. Sharma, A.S., Baker, D.N. and Borovsky, J.E., Nonequilibrium phenomena in the magnetosphere, (eds.) Sharma, A.S. and Kaw, P.K., *Nonequilibrium Phenomena in Plasmas*, 3-22, 2005.; Sharma, A.S., Ukhorski, A.Y. and Sitnov, M.I., Global and multiscale phenomena of the magnetosphere, (eds.) Sharma, A.S. and Kaw, P.K., *Nonequilibrium Phenomena in Plasmas*, 117-144, 2005.
35. Consolini, G. et al., Multifractal Structure of Auroral Electrojet Index Data, *Phys. Rev. Lett.* 76, 4082–4085, 1996.; Consolini, G., [1997] "Sandpile cellular automata and magnetospheric dynamics", 8th GIFCO Conference: Cosmic physics in the year 2000, p. 123 - 126.; Consolini G., and Chang T., *Magnetic Field Topology and Criticality in Geotail Dynamics: Relevance to Substorm Phenomena*, *Space Sc. Rev.*, 95, 309-321, 2001.; Consolini G. et al., On the magnetic field fluctuations during magnetospheric tail current disruption: A statistical approach, *J. Geoph. Research*, 110, A07202, 2005.
36. Abramenko, V.I., *Solar MHD turbulence in regions with various levels of flare activity*, *Astronomy Reports*, Volume 46, Number 2, 161-171, 2002.
37. Pavlos G.P., et al., First and second order non-equilibrium phase transition and evidence for non-extensive Tsallis statistics in Earth’s magnetosphere, *Physica A*, 390, 2819-2839, 2011.; Pavlos, G.P., Karakatsanis, L.P. and Xenakis, M.N., Tsallis non-extensive statistics, intermittent turbulence, SOC and chaos in the solar plasma. Part one: Sunspot dynamics, Submitted for Publications, <http://arxiv.org/abs/1201.6498>, 2012.; Pavlos, G.P., Karakatsanis, L.P. and Xenakis, M.N., Sarafopoulos, D. and Pavlos, E.G., Tsallis Statistics and Magnetospheric Self-organization, *Physica A*, 393, 3069-3080, 2012.
38. Zaslavsky, G.M., Renormalization group theory of anomalous transport in systems with Hamiltonian chaos, *Chaos* 4(1), 25, 1994.; Zaslavsky, G.M., Fractional kinetic equation for Hamiltonian chaos, *Physics D* 76, 110-122, 1994.; Zaslavsky, G.M., Chaotic dynamics and the origin of statistical laws, *American Institute of Physics*, S-0031-9228-9908-030-8, 1999.; Zaslavsky, G.M., Chaos, fractional kinetics, and anomalous transport, *Physics Reports*, 371, 461–580, 2002.
39. Chen W., (2006), Time – space fabric underlying anomalous diffusion, *Chaos, Solitons & Fractals*, 28 (4), 923–929.
40. Wilson, K.G., The renormalization group: Critical phenomena and the Kondo problem, *Reviews of Modern Physics*, 47(4), 773, 1975.; Wilson, K.G., The renormalization group and critical phenomena, *Reviews of Modern Physics*, 55(3), 583, 1983.
41. Binney, J.J., et al., *The Theory of Critical Phenomena An introduction to the Renormalization Group*, Oxford University Press, 1992.

42. Kogut, J.B., An introduction to lattice gauge theory and spin systems, /review of Modern Physics, 51(4), 659, 1979.
43. Ivancevic, V. and Ivancevic, T.T., Complex Nonlinearity, Chaos, Phase Transitions, Topology Change and Path Integrals, Springer, 2008.
44. Biro, T., Muller, B. & Matinyan, S. [2004] "Chaotic Quantization: Maybe the Lord plays dice, after all?", Lecture Notes in Physics, 633, p. 164.
45. Krommes J.A., Systematic statistical theories of plasma turbulence and intermittency: current status and future prospects, Physics Reports 283, 5-48, 1997.; Krommes J.A., Fundamental statistical descriptions of plasma turbulence in magnetic fields, Physics Reports, 360, 1-352, 2002.
46. Lui A.T.Y., Multiscale phenomena in the near-Earth magnetosphere, Journal of Atmospheric and Solar-Terrestrial Physics, 64, 125-143, 2002.
47. Svozil, K. and Zeilinger, A., Dimension of space-time, International Journal of Modern Physics A, Volume 1(4), 971-990, 1986.
48. Antoniadis I, (1998), Fractal geometry of quantum space-time at large scales, Physics Letters B, 444, 284-292.
49. Agop, M. et al., El Naschies's $\epsilon^{(\infty)}$ space-time, hydrodynamics model of scale relativity theory and some applications, Chaos, Solitons and Fractals, 34, 1704-1723, 2007.
50. Altaisky, M.V. and Sidharth, B.G., p-Adic Physics Below and Above Planck Scales, Chaos, Solitons and Fractals, 10, 167-176, 1999.
51. Lizzi, F., The structure of Spacetime and Noncommutative Geometry, <http://arxiv.org/abs/0811.0268>, 2002.
52. Majid, S., Quantum groups and noncommutative geometry, Journal of Mathematical Physics, 41(6), 3892, 2000.
53. Ren, F.Y., Liang, J.R., Wang, X.T. and Qio, W.Y., Integrals and derivatives on net fractals, Chaos, Solitons and Fractals, 16, 107-117, 2003
54. Balescu R, (1975), Equilibrium and non-equilibrium statistical mechanicsm, A Wiley Inter. Publ.
55. Burlaga, L.F. and Vinas, A.F., Triangle for the entropic index q of non-extensive statistical mechanics observed by Voyager 1 in the distant heliosphere, Physica A, 356, 375-384, 2005.
56. Ferri G.L., Reynoso Savio M.F., Plastino A., "Tsallis q-triplet and the ozone layer", Physica A, 389, p. 1829-1833, 2010.
57. Temam, R., Infinite-Dimensional Dynamical Systems in Mechanics and Physics, Springer, 1988.
58. Carbone, V., Veltri, P. and Bruno, R., Solar wind low-frequency magnetohydrodynamic turbulence: extended self-similarity and scaling laws, Nonlinear Process in Geophysics, 3, 247-261, 1996.
59. Kovas, A.L. [1994] "Nonlinear Dynamics of Spatio-Temporal Processes in Complex Systems", Mathl. Comput. Modelling, 19, p. 47.
60. Mikhailov, A.S. and Loskutov, A.Yu., Foundations of Synergetic II Complex Patterns, Springer, 1991.
61. Voros, Z., On multifractality of high-latitude geomagnetic fluctuations, Ann. Geophysicae, 18, 1273-1282, 2000.; Voros, Z. et al., Multi-scale magnetic field intermittence in the plasma sheet, Annales Geophysicae, 21, 1995, 2003.; Voros, Z.

- et al., Magnetic turbulence in the plasma sheet, *Journal of Geophysical Research*, 109, A11215, 2004.
62. Leubner, M.P. and Voros, Z., A nonextensive entropy approach to solar wind turbulence, *The Astrophysical Journal*, 618, 547-555, 2005.; Leubner, M.P. and Voros, Z., A nonextensive entropy path to probability distributions in solar wind turbulence, *Nonlinear Processes in Geophysics*, 12, 171-180, 2005.
 63. Dudok de Wit, T. and Krasnosel'skikh, V.V., Non-Gaussian statistics in space plasma turbulence: fractal properties and pitfalls, *Nonlinear Processes in Geophysics*, 3, 262-273, 1996.
 64. Karakatsanis, L.P. & Pavlos, G.P. [2008] "Self Organized Criticality and Chaos into the Solar Activity", *Nonlinear Phenomena in Complex Systems*, 11(2), p. 280-284; Karakatsanis, L.P., Pavlos, G.P., Iliopoulos, A.C., Tsoutsouras, V.G. & Pavlos E.G. [2011] "Evidence for Coexistence of SOC, Intermittent Turbulence and Low-Dimensional Chaos Processes in Solar Flare Dynamics", *Modern Challenges in nonlinear plasma physics: A Festschrift Honoring the Career of Dennis Papadopoulos*, AIP, 1320, p.55-64.
 65. Born, M., *Natural Philosophy of Cause and Chance*, Oxford University Press, 1948.
 66. YankovVV, (1997), Three rules of nonlinear physics, *Physics Reports*, 283, 147-160.
 67. Hohenberg, P.C. and Halperin, B.I., Theory of dynamics critical phenomena, *Reviews of Modern Physics*, 49(3), 435, 1977.; Hohenberg, P.C. & Shraiman, B.I. [1989] "Chaotic behavior of an extended system", *Physica D*, 37, p. 109-115.
 68. Elderfield, D., On the resolution of ordering ambiguities associated with the path integral representation of stochastic process, *J. Phys. A: Math. Gen.*, 18, L767-L771, 1985.
 69. Haken, H. [1983] *Synergetics: Introduction and Advanced Topics*, Springer.
 70. Kubo R. et al, (1998), *Statistical Physics II: Non equilibrium statistical mechanics*, Springer.
 71. Lenzi et al, (2000), Statistical mechanics based on Renyi entropy, *Physica A*, 280 (3-4), 337-345.
 72. Robledo A., (2004), Unifying laws in multidisciplinary power-law phenomena: fixed-point universality and nonextensive entropy, *Nonextensive entropy – interdisciplinary applications* Ed. Murray GM and Tsallis C., Oxford Univ. Press, 63-77.
 73. Halsey et al, (1986), Fractal measures and their singularities: the characterization of strange sets, *Physical Review A*, 33,2, 1141 – 1151.
 74. Theiler J., Estimating fractal dimension, *JOSA A*, Vol. 7, Issue 6, pp. 1055-1073, 1990.
 75. Paladin G. and Vulpiani A., (1987), Anomalous scaling laws in multifractal objects, *Physics report*, 156,4, 147 – 225.
 76. Meneveau C. and K.R. Sreenivasan, The multifractal spectrum of the dissipation field in turbulent flows, *Nuclear Physics B (Proc. Suppl.)* 2 (1987) 49-76.; Meneveau C. and Sreenivasan KR, (1991), The multifractal spectrum of the dissipation field in turbulent flows, *Nuclear Physics B*,2, 49-76.
 77. Umarov S. et al. (2007), A generalization of the central limit theorem consistent with non-extensive statistical mechanics, arxiv: cond-mat/0603593v4.

78. Arimitsu T. and N Arimitsu, Tsallis statistics and fully developed turbulence, (2000), J. Phys. A: Math. Gen. 33 L235 doi:10.1088/0305-4470/33/27/L01.; Arimitsu T and Arimitsu A, (2001), Analysis of turbulence by statistics based on generalized entropies, Physica A, 295, 177 – 194.
79. Kolmogorov A., The Local Structure of Turbulence in Incompressible Viscous Fluid for Very Large Reynolds' Numbers, Doklady Akademiia Nauk SSSR, vol.30, p.301-305, 1941.
80. Shlesinger, M.F., Zaslavsky, G.M. and Klafter, J., Strange kinetics, Nature, 363, 31, 1993.
81. Moore, R.L., La Rosa, T.N. and Orwing, L.E., The wall of reconnection-driven magnetohydrodynamics turbulence in a large solar flare, The Astrophysical Journal, 438, 985-996, 1995.
82. Rempel, E.L. and Chian A.C.-L., Space plasma dynamics: Alfvén intermittent chaos, Advances in Space Research, 35, 951-960, 2005.
83. Marsch E. and Tu CY, (1997), Intermittency, non-Gaussian statistics and fractal scaling of MHD fluctuations in the solar wind, Nonlinear Processes in Geophysics 4, 2, 101-124.
84. Feynman, R.P., Statistical Mechanics A set of lectures, The Benjamin/Cummings Publishing Company, INC., 1972.